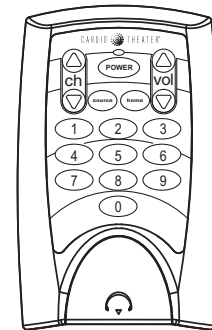
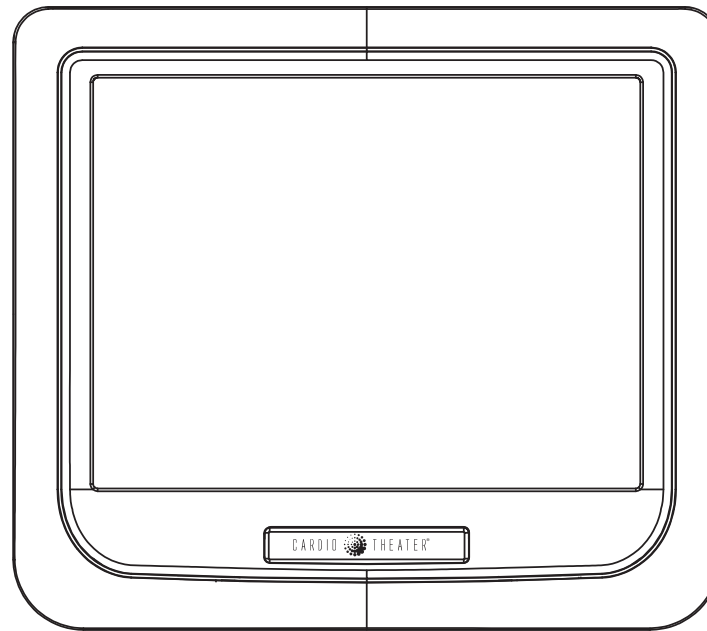


PVS15DT Personal Viewing System and CNTE7 Standalone Controller

Operation and Maintenance Guide



Important Safety Instructions

Always follow basic safety precautions when using this equipment to reduce the chance of injury, fire, or damage.

- Read all instructions before installing and using the equipment. Follow any labels on the equipment.
- Use the power adapter provided with the equipment. Plug the power adapter into an appropriate, grounded power outlet as marked on the equipment. Do not use accessory attachments that are not recommended by the manufacturer, as such attachments may cause injuries.
- Position power cables so that they are not walked on or pinched by items placed upon or against them.
- Make sure that the equipment has adequate ventilation. Do not place anything on top of or over the equipment. Do not use on a cushioned surface that could block the ventilation openings.
- Keep the equipment away from water and moisture.
- Locate the equipment away from sources of heat, such as radiators, heat registers, and stoves. Avoid temperature extremes.
- Avoid dropping anything on or spilling anything inside the equipment, because doing so can damage the electronics.
- Do not attempt to service the unit yourself except to follow the maintenance instructions found in this manual.

Broadcast Area Supported

The PVS15DT supports ATSC standards in the North American broadcast market.

Radio Frequency Interference (RFI)

Federal Communications Commission, Part 15

WARNING: To prevent fire or electrical shock, do not expose this equipment to rain, moisture or excess heat.

The unit has been tested and found to comply with the limits for Part 15 of the FCC Rules. These limits are designed to provide reasonable protection against harmful interference when the equipment is operated in a commercial environment.

The PVS generates, uses, and can radiate radio frequency energy and, if not installed and used in accordance with the assembly, installation and maintenance instruction manuals, may cause harmful interference to radio communications.

However, there is no guarantee that interference will not occur in a particular installation. If the unit does cause harmful interference to radio or television reception, which can be determined by turning the equipment off and on, the user is encouraged to try to correct the interference by one or more of the following measures:

- Reorient or relocate the receiving antenna.
- Increase the separation between the equipment and the receiver.
- Connect the equipment into a separate outlet that uses a different circuit than the receiver.

Consult a Radio Technician or an experienced radio/TV technician for help.

WARNING: Per FCC rules, changes or modifications not expressly approved by Radio Theater could void the user's authority to operate the equipment.

Canadian Department of Communications

The PVS does not exceed the Class A limits for radio noise emissions from a digital apparatus set out in the Radio Interference Regulations of the Canadian Department of Communications.

Le présent appareil numérique n'émet pas de bruits radioélectriques dépassant les limites applicables aux appareils numériques de la class A prescrites dans le Règlement sur le brouillage radioélectrique édicté par le ministère des Communications du Canada.

Table of Contents

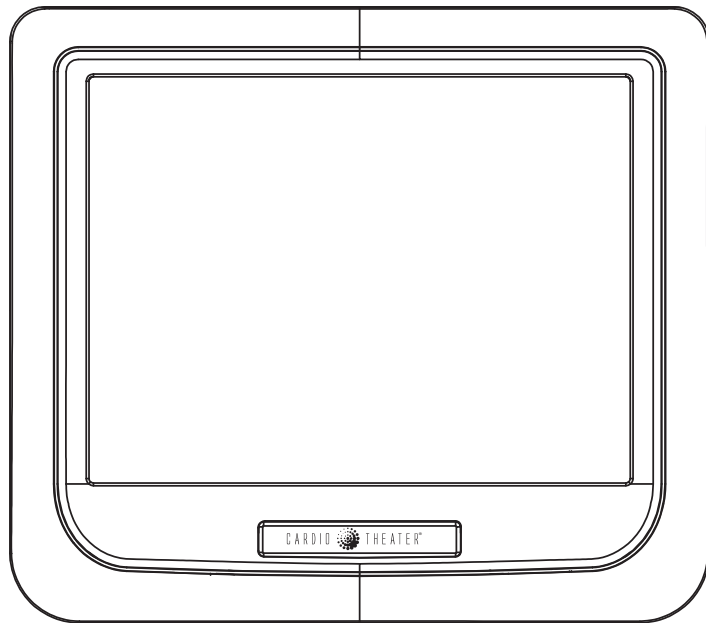
| | | | |
|--|-----------|---|-----------|
| Important Safety Instructions | 1 | Using the Menus | 21 |
| Broadcast Area Supported | 1 | Analog Main Menu | 22 |
| Radio Frequency Interference (RFI) | 1 | Digital Main Menu | 23 |
| Canadian Department of Communications | 2 | Maintenance and Troubleshooting | 25 |
| Before You Begin | 4 | Cleaning the PVS and Controller | 25 |
| Installation Information | 5 | Reprogramming the Standalone Controller | 25 |
| Required Tools | 5 | Replacing the Headphone Jack | 26 |
| Obtaining Service | 6 | Troubleshooting the PVS | 27 |
| Programming the Standalone Controller for the | | Limited Warranty | 28 |
| PVS15DT Screen | 7 | | |
| Initial Search for Channels | 8 | | |
| Manually Adding or Deleting Channels | 10 | | |
| Using the Standalone Controller to | | | |
| Set Up Custom Features | 13 | | |
| Automatic Power On/Off Setup | 14 | | |
| Home Button Feature Setup | 15 | | |
| Inactivity Timer Feature Setup | 16 | | |
| Closed Caption On/Off Setup | 17 | | |
| Forced Commercial Feature Setup | 18 | | |
| Master Reset Feature Setup | 19 | | |
| Quick Reference to Custom Features | 20 | | |

Before You Begin

The Cardio Theater Personal Viewing System (PVS) adds personalized entertainment to workouts. A person steps on the exercise equipment, plugs headphones into the jack, selects a TV program using the Channel buttons, and begins exercising. The program appears on a bright, full-color liquid crystal display (LCD) directly in front of the person, rather than at a distance on the wall. Volume buttons on the standalone controller allow a person to change the audio level. Depending on how the PVS screen is configured, Closed Captioning may appear allowing people to exercise without headphones.

Figure 1 shows the PVS15DT screen and CNTE7 standalone controller.

The PVS15DT supports both analog and digital programming. Each type of programming has its own menu to allow you to set up the channels and customize the screen. To access a menu, the PVS screen must have the appropriate type of channel showing. For example, to display the *analog* Main Menu, an analog channel must be showing; to display the *digital* Main Menu, a digital channel must be showing. You can tell the difference between analog and digital channels because the screen briefly displays the channel number preceded by an "A" or "D."



The LED lights when the PVS screen is on and flashes to indicate programming mode.

Channel buttons let you move through the available channels. Holding a button down rapidly scrolls through the channels.

Source button scrolls through analog TV mode, digital TV mode, and video mode. Use to enter a hyphen when specifying a digital channel, such as 9-5.

Power button turns the screen on and off.

Volume buttons let you adjust the audio level when using headphones. Holding a button down rapidly changes volume.

Home button jumps to a predefined channel set by the facility.

Number keys let you enter specific channel numbers.

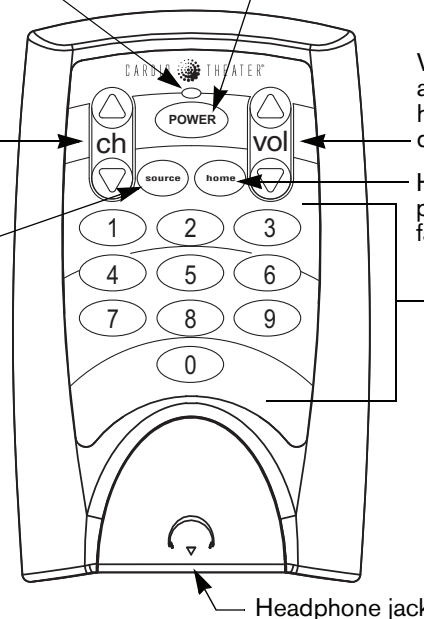


Figure 1: Overview of PVS15DT screen and CNTE7 standalone controller

Note: See *Using the Menus* for an overview of the analog and digital menus. When you display a menu, you enter Video Setup mode. This mode should be reserved for the installing technician and select fitness facility personnel.

A number of custom features are available on the PVS that a fitness facility might want to use, such as Automatic Power On/Off, Headphone Inactivity Timer, and Home button. You set these options using the Program Device mode, which is available only through special button sequences from the standalone controller. Similar to the Video Setup mode, the Program Device mode should be reserved for the installing technician and select fitness facility personnel.

Important: See *Using the Standalone Controller to Set Up Custom Features for instructions on programming the custom features. A Quick Reference on page 20 steps you through the programming once you are familiar with the instructions.*

The CNTE7 standalone controller includes a feature that gives a person the chance to quickly re-insert the headphones if they become accidentally disconnected. If the headphones are re-inserted within 15 seconds, the standalone controller will not perform any of the custom headphone detection features, such as the Inactivity Timer or Automatic Power On/Off.

This guide explains how to set up the analog and digital channels. It also explains how to program the custom features available through the Program Device mode, gives an overview of the PVS menus and screens, and covers any maintenance requirements. For proper operation and maintenance, please read this guide thoroughly and follow the instructions.

Important: *This guide covers PVS software version A1.x D1.x. Your software may be different from that described in this guide. The PVS15DT supports ATSC standards in the North American broadcast market.*

Installation Information

Fitness facilities can add a PVS screen to any Precor exercise equipment using an integrated bracket assembly. The bracket assembly allows the PVS screen to be installed conveniently close to people exercising. For exercise equipment from other manufacturers, fitness facilities can use a stand designed to safely support the PVS screen, and place the stand near the equipment.

The standalone controller is attached during installation; it can be attached to the handlebars of almost any exercise equipment, except those with handlebars that move.

The PVS screen receives power from a DC power block, which is plugged into a standard AC power outlet. It does not rely on power from the exercise equipment. The standalone controller receives power from the PVS screen. The coiled power cable is connected to the screen (and controller) during assembly.

For information about installing the PVS and standalone controller on equipment, refer to the appropriate integrated bracket assembly instructions. To install the PVS on a stand, refer to the *Personal Viewing System (PVS) Stand Assembly Instructions*.

Required Tools

The CNTE7 standalone controller lets you set up the PVS without any additional equipment. However, you may find some programming is easier with the optional remote control. Contact your Cardio Theater dealer to order one or more remote controls as desired.

Obtaining Service

Do not attempt to service any of the equipment provided in the Cardio Theater PVS system except as described in this guide. For information about product operation or service, refer to the Cardio Theater web site at www.cardiotheater.com or contact an authorized Cardio Theater Technical Support Representative at 1-800-776-6695 or service@cardiotheater.com. Representatives are available to serve you from 6:00 am to 5:00 pm, Monday through Friday, U.S.A. Pacific Time.

Returning Equipment to Cardio Theater

To return equipment to Cardio Theater for any reason, you must contact Cardio Theater Technical Support and obtain a return authorization (RMA) number. When requesting the RMA number, explain why you are returning the equipment, for example you ordered too many controllers and the extra controller can be returned to stock, or the equipment needs repairs.

Important: *Equipment must be shipped with an RMA number in order for Cardio Theater to process it. Any equipment received without an RMA number will be returned to the sender.*

Programming the Standalone Controller for the PVS15DT Screen

After you install the PVS hardware and complete all power and cable/antenna connections, you can turn on the PVS screen and program the channels and custom features. First, however, the CNTE7 standalone controller must be programmed to support the PVS15DT screen. The CNTE7 controller comes factory-preset for analog PVS screens with software version 1.1 or higher.

To program the controller for the PVS15DT screen, follow these steps. These steps explain how to reset and program the controller.

1. Turn on the PVS screen if it is not already turned on.
2. Plug in headphones before proceeding to make sure that the screen does not turn off while you are programming. You should always plug in headphones before doing any programming with the standalone controller.
3. Using the Channel buttons, move to any analog channel. An "A" appears before the number. You should perform any programming in analog TV mode.
4. To make sure you start with all custom features set at their defaults, perform a master reset of the controller. Press both **Volume ▲** and **Channel ▲** buttons simultaneously until the LED begins flashing (about 3 seconds). The flashing LED on the controller and the mute icon on the screen indicate that the PVS screen has entered Program Device mode.

Note: While you are in Program Device mode, if you do not press a button within 15 seconds, the PVS screen will time out and return to normal viewing mode.

5. Press the **Power** button. All features on the controller return to the factory defaults. The Volume bar appears confirming the change.

For more information about resetting the controller, see *Master Reset Feature Setup*.

6. Press both **Volume ▲** and **Power** buttons simultaneously until the LED begins flashing (about 3 seconds). The flashing LED on the controller and the mute icon on the screen indicate that the PVS screen has entered Program Device mode.
7. To set the controller to support the PVS15DT, press **4**.

The volume bar appears confirming the entry. Then, the LED stops flashing and the PVS screen returns to normal viewing mode.

Important: You must reprogram the controller for the PVS15DT screen whenever someone resets all the custom features using the Master Reset feature. Otherwise, the standalone controller may not correctly operate the PVS screen.

For more information about programming the standalone controller for PVS screens, see *Reprogramming the Standalone Controller* later in this guide.

Initial Search for Channels

To program the channels on the PVS, simply run the automatic program feature from the analog Main Menu. This feature identifies both the analog and digital TV channels that are available. After the feature runs, the PVS screen displays only those channels that are available.

You can use either the standalone controller or remote control to perform this procedure.

Important: *To set up both analog and digital channels, always use the automatic program feature from the analog Main Menu. The channel setup feature on the Digital DTV Setup menu sets up only digital channels.*

While you are using the analog Main Menu, if you do not press a button or complete a sequence after a short period of time, the analog Main Menu disappears and the PVS screen returns to normal viewing mode.

To exit from any menu screen, you can press the Home button on the standalone controller, or the Menu button on the remote control. Each press of the Home or Menu button moves you back one menu until you reach normal viewing mode.

Note: The main menu remains available for about 15 seconds after you return to normal viewing mode. This allows you to easily return to the main menu by pressing the Home or Menu button if you happen to press the Home or Menu button too many times.

1. Make sure the PVS screen is turned on.
2. Make sure you are on an analog channel. An “A” will precede the channel number. If needed, use the Channel buttons to change the channel until you reach an analog channel. You must have an analog channel showing to display the analog Main Menu.
3. Display the **analog Main Menu** as follows:

| If you are using the... | Then... |
|-------------------------|--|
| Standalone controller | Press both Volume ▼ and Channel ▼ buttons for 3 seconds. |
| Remote control | Press Menu button. |

The **analog Main Menu** appears on the PVS screen, and you enter Video Setup mode.

If the channel changes while you are pressing the buttons on the controller, generally you can continue with this process. However, the digital Main Menu may have appeared instead of the analog Main Menu. Make sure your screen matches the analog Main Menu shown in Figure 2.

Important: *If your Main Menu has “DTV Setup,” the digital Main Menu is showing. Press the Home or Menu button to exit the screen, use the Channel buttons to find an analog channel, and press the Home or Menu button again. If you do this quickly, while the controller LED is flashing, you can bring up the analog Main Menu easily. Then follow the instructions in step 4.*

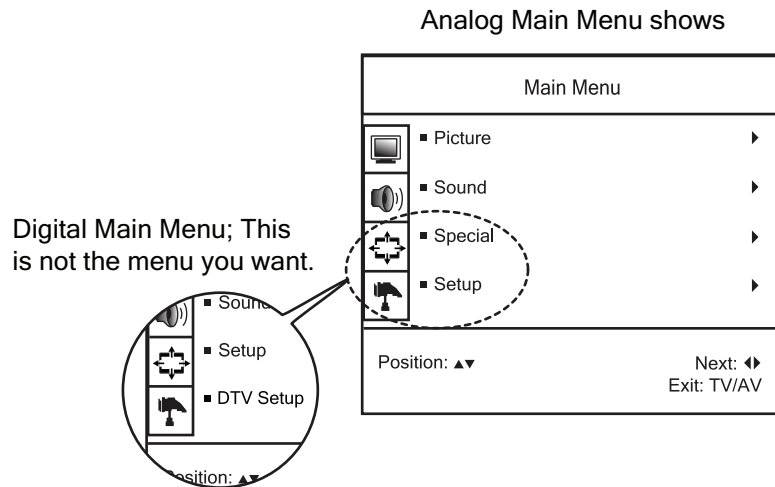


Figure 2: Make sure you see the analog Main Menu

4. Move to **Setup** using the Channel ▼ button, and then select that option as follows:

| If you are using the... | Then... |
|-------------------------|---|
| Standalone controller | Press the Power button to select it. |
| Remote control | Press the SEL button to select it. |

The analog **Setup** menu appears.

5. At the analog **Setup** menu, select **Auto Program**.
The **Auto Program** menu appears with **Table** highlighted.
6. At the **Table** option, select the appropriate TV format mode for the PVS by using the Volume buttons to move to the appropriate mode. Typically, you would select the **Cable STD** mode.
7. Use the Channel ▼ button to move to **Start**.

8. With **Start** highlighted, begin the automatic search process as follows:

| If you are using the... | Then... |
|-------------------------|---|
| Standalone controller | Press the Power button to start the process. |
| Remote control | Press the SEL button to start the process. |

The search process may take several minutes to finish. The PVS searches for analog channels first, and then searches for digital channels. The digital Channel Setup screen appears when it starts to search for digital channels.

As the PVS scrolls through the list of analog channels, each channel number appears on the screen. When the PVS finds an analog channel with enough signal strength, it changes the color of the channel number.

When the PVS searches for digital channels, a bar shows the percentage complete during the process.

At the end of the process, the lowest programmed channel number appears on the screen.

Note: You can stop the automatic programming process at any time as follows:

| During the... | Then... |
|--------------------------------|---|
| Analog channel search process | Press the Home or Menu button |
| Digital channel search process | Press the Power or SEL button |

Manually Adding or Deleting Channels

Sometimes, if the signal for a channel is not strong enough, the PVS screen may not catch it during automatic programming. Follow these instructions to add a missed channel, or delete an unwanted channel. You will need to follow the appropriate procedure, depending on the type of channel you want to add or delete. An analog channel uses the analog Main Menu; a digital channel uses the digital Main Menu.

Deleting an unwanted channel will not keep people from selecting it if they use the number buttons. This process does not block access to that channel. For example, if you delete channel 125, and a person enters 125 with the number buttons, that channel will appear on the screen. However, when a person uses the Channel buttons to scroll through the available channels, channel 125 will not appear.

You can use either the standalone controller or remote control to perform this procedure.

While you are in a menu, if you do not press a button or complete a sequence after a short period of time, the menu disappears and the PVS screen returns to normal viewing mode.

To exit from any menu screen, you can press the Home button on the standalone controller, or the Menu button on the remote control. Each press of the Home or Menu button moves you back one menu until you reach normal viewing mode.

Note: The main menu remains available for about 15 seconds after you return to normal viewing mode. This allows you to easily return to the main menu by pressing the Home or Menu button.

Analog Instructions

1. Make sure the PVS screen is turned on.
2. Make sure the PVS is showing an analog channel. An “A” appears before the number. If needed, use the Channel buttons to move to an analog channel. You must have an analog channel showing to display the analog Main Menu.
3. Display the **analog Main Menu** as follows:

| If you are using the... | Then... |
|-------------------------|--|
| Standalone controller | Press both Volume ▼ and Channel ▼ buttons for 3 seconds. |
| Remote control | Press the Menu button. |

Because an analog channel was showing on the PVS screen, the **analog Main Menu** appears. You also enter Video Setup mode.

4. Move to **Setup** using the Channel ▼ button, and then select that option.

| If you are using the... | Then... |
|-------------------------|---|
| Standalone controller | Press the Power button to select it. |
| Remote control | Press the SEL button to select it. |

The analog **Setup** menu appears.

Important: If your Main Menu has “DTV Setup,” the digital Main Menu is showing. The channel changed to a digital channel while you were entering Video Setup mode. To move to the analog Main Menu, press the Home or Menu button, move to an analog channel, and press the Home or Menu button again. The analog Main Menu appears. Then, follow the instructions in step 4 to select Setup.

- At the analog **Setup** menu, move to **Manual Program** and select it.

The **Manual Program** menu appears. You will see the current channel displayed in the Channel field.

- Use the Volume buttons to specify the channel you want to add or remove. The screen changes to that channel.
- Move to **Skip** using the Channel buttons, and then change the setting as desired using the Volume buttons.

| If you want the channel to... | Then, select... |
|-------------------------------|--|
| Appear | Off (Skip Off) |
| Not appear | On (Skip On, so it will skip that channel) |

- Move to **Memorize** using the Channel buttons and press the **Power** or **SEL** button to select that option.
- Press the **Home** or **Menu** button as needed to exit Video Setup mode and return to normal viewing mode.
- Use the Channel buttons to scroll through the channels to confirm that the channel has been added or deleted as desired.

Digital Instructions

- Make sure the PVS screen is turned on.
- Make sure the PVS is showing a digital channel. A "D" appears before the number. If needed, use the Channel buttons to move to a digital channel. You must have a digital channel showing to display the digital Main Menu.

- Display the **digital Main Menu** as follows:

| If you are using the... | Then... |
|-------------------------|--|
| Standalone controller | Press both Volume ▼ and Channel ▼ buttons for 3 seconds. |
| Remote control | Press the Menu button. |

Because a digital channel was showing on the PVS screen, the **digital Main Menu** appears. You also enter Video Setup mode.

- Move to **DTV Setup** using the Channel ▼ button, and then select that option.

| If you are using the... | Then... |
|-------------------------|---|
| Standalone controller | Press the Power button to select it. |
| Remote control | Press the SEL button to select it. |

The digital **DTV Setup** menu appears.

Important: If the fourth option on the Main Menu says "Setup," the analog Main Menu is showing. The channel changed to an analog channel while you were entering Video Setup mode. To move to the digital Main Menu, press the Home or Menu button, use the Channel buttons to select a digital channel, and press the Home or Menu button again. The digital Main Menu appears. Then follow the instructions in step 4 to select DTV Setup.

- At the digital **DTV Setup** menu, move to **Channel Edit** and select it.

The **Channel Edit** screen appears. It shows a list of the available channels.

6. For the channel you want to add or delete, move to the **Add** column and change the setting as desired by pressing the **Power** or **SEL** button.

| If you want the channel to... | Then... |
|-------------------------------|-------------------------------------|
| Appear | Make sure a check mark (✓) appears. |
| Not appear | Remove the check mark. |

7. Press the **Home** or **Menu** button as needed to exit Video Setup mode and return to normal viewing mode.
8. Use the Channel buttons to scroll through the channels to confirm that the channel has been added or deleted as desired.

Using the Standalone Controller to Set Up Custom Features

Cardio Theater has customized a number of features that are commonly used in a fitness facility. The customization allows you to easily enable or disable a feature using the standalone controller. Use of these features is optional.

- **Automatic Power On/Off feature** causes the PVS screen to turn off automatically when headphones are removed and turn on when headphones are inserted.
- **Home Button feature** lets you specify a channel that will appear when someone presses the Home button. If the Inactivity Timer feature is enabled, it will cause this channel to appear when the headphones are removed from the jack.
- **Inactivity Timer feature** causes the screen to display the channel configured for the Home button when headphones are removed from the jack. This feature does not work when the Automatic Power On/Off feature is enabled.
- **Closed Caption On/Off feature** causes the screen to display Closed Captioning (CC1 standard) when no headphones are connected. This feature does not work when the Automatic Power On/Off feature is enabled. This feature is also not available with PAL-compliant PVS screens.
- **Forced Commercial feature** lets you require a person to watch a specific channel for a preset time before that person can use the controller to select a different program. You might use this feature to show an informational program or commercial. This feature occurs after headphones are inserted.
- **Master Reset feature** returns all custom features on the standalone controller to the factory defaults. It also resets the PVS programming mode back to an analog PVS screen.

This section provides instructions for setting up the custom features. At the end of this section, you will find a table that provides a quick reference to the buttons you press. Once you are familiar with setting up these features, you may find the table is all you need.

To set up these features, you access the Program Device mode using the standalone controller. Depending on the feature, you access this mode using a different combination of buttons. Refer to the feature setup instructions or the quick reference for that sequence.

Note: While you are in Program Device mode, if you do not press a button within 15 seconds, the PVS screen will time out and return to normal viewing mode.

You can set up only one custom feature at a time. As soon as you program a feature or the screen times out, the screen returns to normal viewing mode.

Important: You must use the standalone controller to set up these features. The remote control accesses the standard PVS features, not the customized Cardio Theater features.

Before programming any custom features, always plug in headphones to make sure that the screen does not turn off while you are programming.

You should also make sure you are in analog TV mode (an analog channel is showing) when you are programming custom features. An “A” appears before the number on analog channels.

Automatic Power On/Off Setup

The Automatic Power On/Off feature turns the PVS screen on automatically when headphones are inserted into the headphone jack. At the end of the exercise session, when the headphones are removed from the jack, the screen turns off after approximately 10–20 seconds. This feature is typically used to conserve power and lengthen screen life. If this feature is enabled, it overrides any other headphone detection features.

This procedure uses the standalone controller only.

The default for this feature is disabled.

1. Plug in headphones before proceeding to make sure that the screen does not turn off while you are programming.
2. Make sure you are on an analog channel. An “A” will precede the channel number.
3. Press both the **Volume ▲** and **Channel ▲** buttons simultaneously until the LED begins flashing (about 3 seconds). The flashing LED on the controller and the mute icon on the screen indicate that the PVS screen has entered Program Device mode.

If nothing happens, try pressing both Volume ▲ and Channel ▲ buttons at the same time again.

Note: While you are in Program Device mode, if you do not press a button within 15 seconds, the PVS screen will time out and return to normal viewing mode.

4. Choose one based on what you want to do:

| If you want to... | Then... |
|---------------------|-----------------------------------|
| Enable the feature | Press the Channel ▲ button |
| Disable the feature | Press the Channel ▼ button |

As soon as you press a button, the volume bar appears briefly confirming the entry. Then, the LED stops flashing and the PVS screen returns to normal viewing mode.

Home Button Feature Setup

This feature lets you specify a channel that will appear when someone presses the Home button. You can use this feature to allow people to quickly display an in-house channel or special information channel with the press of a single button.

You can specify an analog or digital channel for the Home button. However, to program either channel, you must have the correct TV mode showing: either analog or digital. Pressing the Source button during the process scrolls through analog, digital, and video modes.

If you enable the Inactivity Timer feature, it will cause this channel to appear when the headphones are removed from the jack.

This procedure uses the standalone controller only.

The default channel for the Home button is channel 4.

Note: The Home button is always enabled with the programmed channel; you cannot disable this feature.

1. Plug in headphones before proceeding to make sure that the screen does not turn off while you are programming.
2. Make sure you are on an analog channel. An "A" will precede the channel number.
3. Press both the **Volume ▲** and **Channel ▲** buttons simultaneously until the LED begins flashing (about 3 seconds). The flashing LED on the controller and the mute icon on the screen indicate that the PVS screen has entered Program Device mode.
4. Press the **Source** button one or more times to move to an analog or a digital channel. You must be in the correct analog or digital mode for the channel you want to specify.
5. Specify the desired channel for the Home button.
To specify a digital channel, such as 9-5, use Source for the hyphen. For example, you would enter 9, press Source, and then enter 5.
6. Press the **Home** button.
The Volume bar briefly appears confirming the entry. Then, the LED stops flashing and the PVS screen returns to normal viewing mode. The channel you specified for the Home button displays on the screen.
7. Change the channel so the one you programmed for the Home button does not show.
8. Confirm that the Home button was properly programmed by pressing the Home button.
If the channel you programmed appears, do nothing. The programming is complete. Otherwise, repeat these steps to ensure the button is programmed correctly.

Inactivity Timer Feature Setup

This feature lets you program the screen to display the channel that is configured for the Home button when headphones are removed from the jack. This allows the fitness facility to have an in-house or informational channel showing when the equipment is not currently in use.

You cannot use the Inactivity Timer feature with the Automatic Power On/Off feature. The Automatic Power On/Off feature turns off the screen when headphones are removed from the headphone jack.

This procedure uses the standalone controller only.

The default for this feature is disabled.

1. Plug in headphones before proceeding to make sure that the screen does not turn off while you are programming.
2. Make sure you are on an analog channel. An "A" will precede the channel number.
3. Press both the **Power** and **Home** buttons simultaneously until the LED begins flashing (about 3 seconds). The flashing LED on the controller and the mute icon on the screen indicate that the PVS screen has entered Program Device mode.

4. Choose one based on what you want to do:

| If you want to... | Then... |
|---------------------|---|
| Enable the feature | <ul style="list-style-type: none">• Specify the amount of time in minutes to allow before the screen changes to the channel set for the Home button.• Enter up to three numbers to specify the time, from 1 to 255 minutes.• Press the Channel ▲ button to complete the entry. |
| Disable the feature | Press the Channel ▼ button without pressing any number button. |

As soon as you press a Channel button, the volume bar appears briefly confirming the entry. Then, the LED stops flashing and the PVS screen returns to normal viewing mode.

Closed Caption On/Off Setup

With this feature, Closed Captioning (CC1 standard) displays on the screen when headphones are not plugged into the headphone jack. Then, when headphones are plugged into the jack, the screen stops displaying Closed Captioning. This feature gives people the choice of using headphones to hear the TV program, or not using headphones but simply reading the captioning while they exercise.

Closed Captioning is provided by the TV programming. Some TV programs may not provide Closed Captioning. The Closed Caption On/Off feature displays captioning only when it is available.

Important: *This feature is not available with PAL-compliant PVS screens. In addition, you cannot use CC2 standard with this feature.*

You cannot use the Closed Caption On/Off feature with the Automatic Power On/Off feature. The Automatic Power On/Off feature turns off the screen when headphones are unplugged from the headphone jack.

This procedure uses the standalone controller only.

Important: *Do not use the remote control to turn off and on CC1 on the PVS screen (using the Video Setup menu). Doing so will affect the proper functionality of this feature.*

The default for this feature is disabled.

1. Plug in headphones before proceeding to make sure that the screen does not turn off while you are programming.
2. Make sure you are on an analog channel. An “A” will precede the channel number.
3. Press both the **Volume ▲** and **Channel ▲** buttons simultaneously until the LED begins flashing (about 3 seconds). The flashing LED on the controller and the mute icon on the screen indicate that the PVS screen has entered Program Device mode.
4. Choose one based on what you want to do:

| If you want to... | Then... |
|---------------------|--|
| Enable the feature | Press the Volume ▲ button. A “Caption Off” message appears. |
| Disable the feature | Press the Volume ▼ button. |

As soon as you press a Volume button, the volume bar appears briefly confirming the entry. Then the LED stops flashing and the PVS screen returns to normal viewing mode.

Forced Commercial Feature Setup

The Forced Commercial feature lets you determine what a person sees when he or she starts to exercise. With this feature enabled and a person plugs in headphones, the controller immediately blocks any interaction with the buttons for a preset period, the LED begins flashing slowly, and the controller displays a predefined channel. After the preset period passes, the channel programmed for the Home button appears, the controller returns functionality, and the person can specify any desired channel.

You might use this feature to require people to see an information program about the fitness facility, or a commercial. You can program a digital or analog channel.

Note: To specify a digital channel, such as 9-5, press Source to enter the hyphen. For example, you would enter 9, press Source, and then enter 5.

This procedure uses the standalone controller only.

The default for this feature is disabled.

1. Plug in headphones before proceeding to make sure that the screen does not turn off while you are programming.
2. Make sure you are on an analog channel. An "A" will precede the channel number.
3. Press both the **Power** and **Home** buttons simultaneously until the LED begins flashing (about 3 seconds). The flashing LED on the controller and the mute icon on the screen indicate that the PVS screen has entered Program Device mode.

4. Choose one based on what you want to do:

| <i>To...</i> | <i>Then...</i> |
|---|--|
| Enable this feature with a factory-preset delay of 15 seconds | <ul style="list-style-type: none"> • Press the Source button one or more times to display an analog or digital channel. • Specify the desired "commercial channel." • Press the Home button. The mute icon appears. • Do nothing for at least 20 seconds. The LED will blink on the controller while it records updated settings. |
| Enable with delay that you specify | <ul style="list-style-type: none"> • Press the Source button one or more times to display an analog or digital channel. • Specify the desired "commercial channel." • Press the Home button. The mute icon appears. • Specify the desired time delay in seconds, from 5 to 300, in one second increments, using the number buttons. • Press the Home button again. |
| Disable this feature | <ul style="list-style-type: none"> • Press the Source button once. The mute icon appears. • Press 0. • Press Home button. • Do nothing for at least 20 seconds. |

When the volume bar appears, the feature has been programmed. The LED stops flashing and the PVS screen returns to normal viewing mode.

Master Reset Feature Setup

This feature returns the custom features on the standalone controller to the factory defaults. You might use this feature if you are unsure how the custom features have been programmed.

Important: You must reprogram the controller for the PVS15DT screen whenever you reset all the custom features using the Master Reset feature. Otherwise, the standalone controller may not correctly operate the PVS screen. See Programming the Standalone Controller for the PVS15DT Screen earlier for instructions.

This procedure uses the standalone controller only.

1. Plug in headphones before proceeding to make sure that the screen does not turn off while you are programming.
2. Make sure you are on an analog channel. An "A" will precede the channel number.
3. Press both the **Volume ▲** and **Channel ▲** buttons simultaneously until the LED begins flashing (about 3 seconds). The flashing LED on the controller and the mute icon on the screen indicate that the PVS screen has entered Program Device mode.

4. Press the **Power** button. The volume bar appears confirming the change.

The LED stops flashing and the PVS screen returns to normal viewing mode. All custom features return to the factory defaults.

| Custom Feature | Default |
|------------------------|---|
| Automatic Power On/Off | Disabled |
| Home Button | Analog channel 4 |
| Inactivity Timer | Disabled |
| Closed Caption On/Off | Disabled |
| Forced Commercial | Disabled |
| PVS Screen Programming | Analog PVS screen with software version 1.1 or higher |

Quick Reference to Custom Features

Once you are familiar with setting up the customized Cardio Theater features, you may find the following table useful as a quick reference. These features can only be set up using the standalone controller.

You may find it useful to make a photocopy of this page, which you can easily carry with you as your program the controllers.

Be sure to plug in headphones and change the channel to an analog channel before doing any of these steps.

Table 1: Quick reference to customized features

| Action | Automatic Power On/Off Feature | Home Button Feature | Inactivity Timer Feature | Closed Caption On/Off Feature | Forced Commercial Feature | Programming for PVS Screen | Master Reset Feature | | | | | | | | | | | | | | | | |
|----------------|---------------------------------------|---|--|--------------------------------------|--|--|-----------------------------------|--|--|---|--|---|--|---|--|---|--|---|--|---|--|---|-------------|
| Access feature | Press both Volume ▲ and Channel ▲ | Press both Volume ▲ and Channel ▲ | Press both Power and Home | Press both Volume ▲ and Channel ▲ | Press both Power and Home | Press both Volume ▲ and Power | Press both Volume ▲ and Channel ▲ | | | | | | | | | | | | | | | | |
| Enable | Press Channel ▲ | <ol style="list-style-type: none"> 1 Press Source as needed 2 Specify desired channel 3 Press Home | <ol style="list-style-type: none"> 1 Specify time in minutes 2 Press Channel ▲ | Press Volume ▲ | <p><i>With 15-second delay:</i></p> <ol style="list-style-type: none"> 1 Press Source as needed 2 Specify channel 3 Press Home 4 Do nothing until volume bar appears <p><i>With delay specified by you:</i></p> <ol style="list-style-type: none"> 1 Press Source as needed 2 Specify channel 3 Press Home 4 Specify time in seconds 5 Press Home | Press a number button: For <table style="float: right; border: none;"> <tr> <td style="text-align: right;">Press...</td> <td></td> </tr> <tr> <td></td> <td style="text-align: center;">1</td> </tr> <tr> <td></td> <td style="text-align: center;">2</td> </tr> <tr> <td></td> <td style="text-align: center;">3</td> </tr> <tr> <td></td> <td style="text-align: center;">4</td> </tr> <tr> <td></td> <td style="text-align: center;">5</td> </tr> <tr> <td></td> <td style="text-align: center;">6</td> </tr> <tr> <td></td> <td style="text-align: center;">7</td> </tr> </table> <ul style="list-style-type: none"> • PVS15ATPTL 1.1 or higher • PVS15ATPTL 1.0 • PVS15PTL 2.0X or higher • PVS15DTPTL • PVS15PCL • PVS15ATPCL 1.1 or higher • PVS5 | Press... | | | 1 | | 2 | | 3 | | 4 | | 5 | | 6 | | 7 | Press Power |
| Press... | | | | | | | | | | | | | | | | | | | | | | | |
| | 1 | | | | | | | | | | | | | | | | | | | | | | |
| | 2 | | | | | | | | | | | | | | | | | | | | | | |
| | 3 | | | | | | | | | | | | | | | | | | | | | | |
| | 4 | | | | | | | | | | | | | | | | | | | | | | |
| | 5 | | | | | | | | | | | | | | | | | | | | | | |
| | 6 | | | | | | | | | | | | | | | | | | | | | | |
| | 7 | | | | | | | | | | | | | | | | | | | | | | |
| Disable | Press Channel ▼ | Cannot be disabled; default is channel 4. | Press Channel ▼ | Press Volume ▼ | <ol style="list-style-type: none"> 1 Press Source 2 Press 0 3 Press Home 4 Do nothing until volume bar appears | N/A | N/A | | | | | | | | | | | | | | | | |

Using the Menus

You set up and customize the PVS screen using the Video Setup mode. With the PVS15DT, the Video Setup mode uses two different menu systems to support both analog and digital channels. To access a menu, the PVS screen must have the appropriate type of channel showing. For example, to display the *analog* Main Menu, an analog channel must be showing; to display the *digital* Main Menu, a digital channel must be showing. You can tell the difference between analog and digital channels because the screen briefly displays the channel number preceded by an “A” or “D.”

This section explains the analog and digital menus. You can display a menu using the standalone controller or remote control. Access to these menus and their features should be limited to the installing technician and select facility personnel.

While you are in a menu, if you do not press a button for a short period of time, the menu disappears and the PVS screen returns to normal viewing mode.

Table 2 gives an overview of how to use both menus. Tables 3 through 6 show the menus for analog and digital channels.

Table 2: How to use the menus

| <i>Action</i> | <i>Remote Control</i> | <i>Standalone Controller</i> |
|------------------------------------|----------------------------------|---|
| Access Main Menu | Press Menu button | Press both Volume ▼ and Channel ▼ buttons for 3 seconds |
| Move up and down through the menu | Use Channel (CH) + and – buttons | Use Channel ▲ and ▼ buttons |
| Select an item | Press SEL button | Press Power button |
| Change a parameter value | Use Volume (VOL) + and – buttons | Use Volume ▲ and ▼ buttons |
| Go back to the previous menu level | Press MENU button | Press Home button |

Important: *If you have the wrong main menu showing, you can quickly move to the other menu by doing the following:*

- *Press the Home or Menu button to return to normal viewing mode.*
- *Use the Channel buttons to move to an analog or a digital channel.*
- *Press the Home or Menu button again to display the main menu.*

The main menu stays available for about 15 seconds after you exit to normal viewing mode, allowing you to easily return to the menu by pressing the Home or Menu buttons.

Analog Main Menu

This section covers the analog Main Menu, shown in Figure 3. You use the analog Main Menu to set up and customize the analog channels on the PVS. You should also automatically program both analog and digital channels using the Auto Program feature available through this menu. The different features available through this menu are briefly explained in the tables.

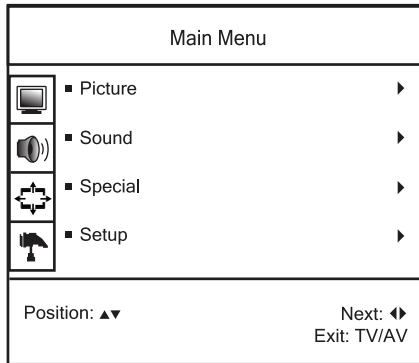


Figure 3: The Analog Main Menu lets you customize analog channels

Table 3: Analog Main Menu

| <i>Main Menu Selection</i> | <i>Description</i> |
|----------------------------|---|
| Picture | Allows you to adjust contrast, brightness, and other features to improve the quality of the picture shown on the screen. |
| Sound | Provides controls for changing the quality of the audio and adjusting audio through the speakers. |
| Special | Provides access to features such as Closed Captioning and Parental Control. You can also reset values that have been changed, such as on the Picture menu. If needed, use this menu to determine the software version of the screen. |
| Setup | Allow you to configure PVS analog channels. |

Table 4: Second-level menu for analog channels

| <i>Main Menu</i> | <i>Second Level</i> | <i>Information</i> |
|------------------|---------------------|-----------------------------|
| Picture | Color Temperature | |
| | Contrast | Default is 75. |
| | Brightness | Default is 65. |
| | Color | Default is 75. |
| | Sharpness | Default is 80. |
| | Tint | Default is 0. |
| Sound | Equalizer | |
| | Balance | 0 |
| | AVL | (Automatic Volume Level) On |
| | Surround | Off |
| | Mode | Stereo |

| Main Menu | Second Level | Information |
|-----------|------------------|---|
| Special | Blue Back | Off; Lets you change the background when there is no signal on a channel. |
| | Auto Sleep | Off; With this feature turned on, the screen will automatically switch to standby mode approximately 10 minutes after the TV program ends. |
| | Childlock | Off; N/A |
| | Caption | Off; Displays any captioning provided by the TV programming. |
| | Parental Control | Allows you to block unwanted TV programs based on different ratings. |
| | Auto On | On; N/A |
| | Reset | Resets any changed values to their defaults. |
| | Version | Shown in the center of the menu, this displays the software version of the PVS screen. |
| Setup | Auto Program | Allows you to select the TV format and run automatic programming to set up channels. <i>You can set up both analog and digital channels with this option.</i> |
| | Manual Program | If needed, allows you to add and remove a channel. |
| | Language | Shows a list of languages available for this screen. |
| | Input | Lets you select the input you want to set up: TV, DTV, or Video. |

Digital Main Menu

The digital Main Menu lets you set up and customize the digital channels. This section covers the digital Main Menu, shown in Figure 4. The different features available through this menu are briefly explained in the tables.

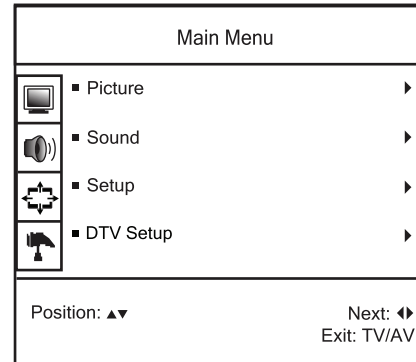


Figure 4: Use the digital Main Menu to customize digital channels

Table 5: Digital Main Menu

| <i>Main Menu Selection</i> | <i>Description</i> |
|----------------------------|---|
| Picture | Allows you to adjust color temperature, contrast, and other features to improve the quality of the picture shown on the screen. |
| Sound | Provides controls for changing the quality of the audio and adjusting audio through the speakers. |
| Setup | Lets you adjust the position of the display on the screen. |
| DTV Setup | Allows you to configure PVS digital channels. You can also set up parental control and closed captioning. |

Table 6: Second-level menu for digital channels

| <i>Main Menu</i> | <i>Second Level</i> | <i>Information</i> |
|------------------|---------------------|--|
| Picture | Color Temperature | RGB |
| | Contrast | Default is 75. |
| | Brightness | Default is 65. |
| | Color | Default is 75. |
| | Sharpness | Default is 80. |
| Sound | Equalizer | |
| | Balance | 0 |
| | AVL | (Automatic Volume Level) On |
| | Surround | Off |
| Setup | H-Position | |
| | V-Position | |
| | Reset | |
| DTV Setup | Channel Setup | Allows you to run automatic programming for digital channels only. |
| | Channel Edit | If needed, allows you to add and remove a channel. |
| | Parental Control | Allows you to block unwanted TV programs based on different ratings. |
| | Caption | Displays any captioning provided by the TV programming. |
| | Input | |

Maintenance and Troubleshooting

In general, the PVS screen and standalone controller require little maintenance and will rarely experience problems once installed. However, you may find the information in this section useful.

The standalone controller is designed to handle use by many people in a fitness facility. However, in the unusual event that the standalone controller needs to be replaced, you may need to program the controller so it supports your PVS screen. This section explains how to program the controller for different PVS screens.

This section also explains how to replace the headphone jack when it no longer provides good audio quality.

Cleaning the PVS and Controller

For the Precor exercise equipment, follow the daily cleaning instructions and cautionary statements found in the *Product Owner's Manual*.

Periodically dust the PVS screen with a soft clean cloth.

CAUTION: Do not use liquid cleaners or aerosol cleaners to clean the screen. Do not use any solvents such as alcohol and paint thinner, or acidic cleaners.

Each week, clean the standalone controller with a mild soap and water solution. Lightly dampen a soft clean cloth with the solution and wipe the controller. Do not use too much solution on the cloth or spray cleaning solution directly on controllers. Doing so could cause moisture to enter through the connector and damage the controller.

Reprogramming the Standalone Controller

The CNTE7 standalone controller is factory-preset for an analog PVS screen with software version 1.1 or higher. To use it with any other PVS screen, you will need to program the controller.

Before doing so, you will need to determine the PVS software version, which is typically listed on the analog Special menu. You may need to use the remote control to access this information.

You should also perform a master reset of the features on the controller to return them to factory defaults.

To program the CNTE7 standalone controller for your PVS screen, follow these steps:

1. Determine the software version of the PVS screen.
2. Plug in headphones before proceeding to make sure that the screen does not turn off while you are programming.
3. Make sure you are on an analog channel. An "A" will precede the channel number.
4. Perform a master feature reset as explained in *Master Reset Feature Setup* earlier in this guide.
5. Press both **Volume ▲** and **Power** buttons simultaneously until the LED begins flashing (about 3 seconds). The flashing LED on the controller and the mute icon on the screen indicate that the PVS screen has entered Program Device Mode.

- Press a number button based on the PVS screen with which this controller will work.

| For... | Then... |
|-----------------------------------|----------|
| PVS15ATPTL version 1.1 and higher | Press 1. |
| PVS15ATPTL version 1.0 | Press 2. |
| PVS15PTL version 2.0X and higher | Press 3. |
| PVS15DTPTL | Press 4. |
| PVS15PCL | Press 5. |
| PVS15ATPCL version 1.1 or higher | Press 6. |
| PVS5 | Press 7. |

The volume bar appears confirming the entry. Then, the LED stops flashing and the PVS screen returns to normal viewing mode.

Replacing the Headphone Jack

When someone using a standalone controller experiences no sound or poor sound quality (such as intermittent sound or crackling), you should check the headphone jack. Try moving the headphone plug in the headphone jack. If the problem continues, the jack should be replaced.

The controller is designed to make changing the headphone jack a quick and easy job, one easily done at the facility. You will need a Phillips-head screwdriver to replace the headphone jack, wire cutter, pliers, and two new wire ties.

You do not need to disconnect the coiled power cable from the controller to perform this procedure.

- Cut the two wire ties holding the standalone controller to the equipment. Remove the wire ties from the controller and toss.

- Remove the two screws at the bottom of the controller with a Phillips-head screwdriver. See Figure 5.

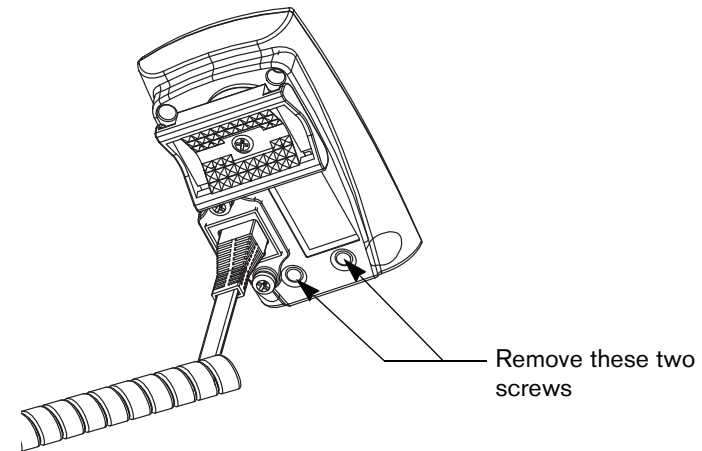


Figure 5: Remove screws holding headphone jack

- Remove the headphone jack.
 - Insert a new headphone jack.
 - Insert the two screws, removed earlier, and tighten.
 - Insert two wire ties through the holes in the mounting bracket on the back of the controller.
 - Place the controller on the neoprene mounting pad or rubber adapter mounts, and then attach it to the equipment with the wire ties. Use the pliers to tighten the wire ties so the controller cannot move.
- Important:** Be sure to secure the controller so that it cannot move. If the controller moves, it may damage the exercise equipment as well as itself, and void the Limited Warranty.
- Cut off the excess plastic from the wire ties, being careful not to leave any sharp edges on the wire ties.

Troubleshooting the PVS

Table 7 may help you to understand and troubleshoot any problems that you encounter with the PVS screen and standalone controller. If the suggestions in the table do not help you solve the problems that you encounter, please contact Cardio Theater Technical Support.

Table 7: How to solve most problems

| <i>Issue</i> | <i>What to Do</i> |
|------------------------------|--|
| No power | Make sure the LED is lit on the screen and on the controller. Check the power adapter to see if the green LED is lit. If Automatic Power On/Off feature is enabled, connect head phones to the jack. |
| No Closed Captioning | Make sure Caption is On under the Caption feature in the analog Special menu or digital DTV Setup menu. Closed Captioning may not be available on that channel; try a different channel. |
| Closed Captioning is delayed | A delay between captioning and the actual dialogue is common in live broadcasts. |
| Closed Captioning is garbled | Reception is weak or poor signal strength, which is causing problems with the text display. Try a new channel. Make sure cable is securely connected to its connector on the back of the PVS screen. |
| No picture | Make sure PVS screen is fully plugged into a power outlet. Push the Power button. Try a new channel; it may be station trouble. Turn the PVS screen off, and then turn it back on after one minute. |
| Poor picture | Adjust controls such as Brightness, Color, and Sharpness under the Picture menu (in Main Menu). |
| No audio | Increase the audio level with the Volume ▲ button. Check the headphone jack. Replace the headphone jack if necessary. |
| Poor audio | Re-insert the plug into the headphone jack. Try moving the plug in the jack to see if the sound improves. Replace the headphone jack if necessary. |

| <i>Issue</i> | <i>What to Do</i> |
|------------------------------|---|
| Bars on screen | Try a new channel; it may be station trouble. Make sure video cable is connected to connector on the back of the PVS screen. Check for local interference. |
| Poor TV reception | Adjust Sharpness under the Picture menu (in Main Menu). Try a new channel; it may be station trouble. Make sure coaxial cable is securely connected to its connector on the back of the PVS screen. Check for local interference. |
| Ghosts in picture | Try a new channel; it may be station trouble. Make sure coaxial cable is securely connected to its connector on the back of the PVS screen. Check for local interference. |
| TV program cannot be watched | Specify channel using 0–9 keys on the standalone controller or remote control. If necessary, rerun the Auto Program feature (see <i>Initial Search for Channels</i> .) |

Limited Warranty

PLEASE READ THESE WARRANTY TERMS AND CONDITIONS CAREFULLY BEFORE USING YOUR CARDIO THEATER PRODUCT. BY USING THE EQUIPMENT, YOU ARE CONSENTING TO BE BOUND BY THE FOLLOWING WARRANTY TERMS AND CONDITIONS.

Limited Warranty.

Precor Incorporated ("Precor") warrants all new Cardio Theater products to be free from defects in materials and manufacture for the warranty periods set forth below. The warranty periods commence on the invoice date of the original purchase. This warranty applies only against defects discovered within the warranty period and extends only to the original purchaser of the product. Parts repaired or replaced under the terms of this warranty will be warranted for the remainder of the original warranty period only. To claim under this warranty, the buyer must notify Precor or your authorized Cardio Theater dealer within 30 days after the date of discovery of any nonconformity and make the affected product available for inspection by Precor or its service representative. Cardio Theater product deemed defective by a Cardio Theater representative, will be issued a return authorization number. **Precor will not accept returns without a return authorization number.** Precor reserves the right, at their option, to repair or replace the product after verification of defect. Product that fails after the warranty period expires will be repaired or replaced at the current part and labor pricing after authorization from the customer. Repairs are warranted for 90 days.

Precor's obligations under this warranty are limited as set forth below.

Warranty Periods and Coverage.

| | | |
|---|---------|---------------|
| • Cardio Theater Transmitters <i>xTV-T Wireless or Wired Floor Models xTVFM system transmitter</i> | 3 Years | Parts & Labor |
| • Cardio Theater Receivers <i>XTV-R Wireless or Wired Upper Models XTVFM system receiver</i> | 1 Year | Parts & Labor |
| • Cardio Theater LCD Screen (PVS) | 1 Year | Parts & Labor |
| • Cardio Theater Screen Controllers | 1 Year | Parts & Labor |
| • Quick Change Headphone Jack | 90 Day | Parts Only |
| • Optional DVD Player | 1 Year | Parts |
| • CT Experience Series Screen (PVS12) | 2 Years | Parts & Labor |
| • CT Experience Series Screen Controller | 2 Years | Parts & Labor |
| • CT Experience Series 900 & 863 Receiver | 2 Years | Parts & Labor |
| • CT Experience Series Quick Change Headphone Jack | 90 Days | Parts Only |

Conditions and Restrictions.

This warranty is valid only in accordance with the conditions set forth below:

1. The warranty applies to the Cardio Theater product only while
 - a. it remains in the possession of the original purchaser and proof of purchase is demonstrated,
 - b. it has not been subjected to accident, misuse, abuse, improper service, or mechanical, electrical or non-Precor modification.
 - c. claims are made within the warranty period.
2. This warranty does not cover damage or product failure caused by electrical wiring not in compliance with electrical codes or Precor owner's manual specifications, or failure to provide reasonable and necessary maintenance as outlined in the owner's manual.
This warranty excludes misuse or failures of, for example, poor quality CD's, multiple discs inserted in the player, failures caused by home-produced copies of discs, etc.
3. Except in Canada, Precor does not pay labor outside the United States.
4. Warranties outside the United States and Canada may vary. Please contact your local Dealer for details.

This Limited Warranty shall not apply to:

1. Software (PROM) version upgrades.
2. Normal wear and tear, consumables and cosmetic items, including, but not limited to the following: labels.
3. Repairs performed on Cardio Theater products missing a serial number or with a serial tag that has been altered or defaced.
4. Service calls to correct installation of the product or instruct owners on how to use the product.
5. Pickup and delivery involved with repairs.
6. Any labor costs incurred beyond the applicable labor warranty period.
7. The user is cautioned that changes or modifications not expressly approved by the manufacturer of the product could void the user's authority to operate the product.

Disclaimer and Release.

The warranties provided herein are the exclusive warranties given by Precor and supersede any prior, contrary or additional representations, whether oral or written. ANY IMPLIED WARRANTIES, INCLUDING THE WARRANTY OF MERCHANTABILITY OR FITNESS FOR A PARTICULAR PURPOSE THAT APPLY TO ANY PARTS DESCRIBED ABOVE ARE LIMITED IN DURATION TO THE PERIODS OF EXPRESS WARRANTIES GIVEN ABOVE FOR THOSE SAME PARTS. PRECOR HEREBY DISCLAIMS AND EXCLUDES THOSE WARRANTIES THEREAFTER. Some States do not allow limitations on how long an implied warranty lasts, so the above limitation may not apply to you. PRECOR ALSO HEREBY DISCLAIMS AND EXCLUDES ALL OTHER OBLIGATIONS OR LIABILITIES, EXPRESS OR IMPLIED, ARISING BY LAW OR OTHERWISE, WITH RESPECT TO ANY NONCONFORMANCE OR DEFECT IN ANY PRODUCT, INCLUDING BUT NOT LIMITED TO: (A) ANY OBLIGATION, LIABILITY, RIGHT, CLAIM OR REMEDY IN TORT, WHETHER OR NOT ARISING FROM THE NEGLIGENCE OF PRECOR OR ITS SUPPLIERS (WHETHER ACTIVE, PASSIVE OR IMPUTED); AND (B) ANY OBLIGATION, LIABILITY, RIGHT, CLAIM OR REMEDY FOR LOSS OF OR DAMAGE TO ANY PRODUCT. This disclaimer and release shall apply even if the express warranty set forth above fails of its essential purpose.

Exclusive Remedies.

For any product described above that fails to conform to its warranty, Precor will provide, at their option, one of the following: (1) repair; (2) replacement; or (3) refund of the purchase price. Limited Warranty service may be obtained by contacting the authorized dealer from whom you purchased the item. Precor compensates Servicicers for warranty trips within their normal service area to repair commercial product at the customer's location. You may be charged a trip charge outside the service area. THESE SHALL BE THE SOLE AND EXCLUSIVE REMEDIES OF THE BUYER FOR ANY BREACH OF WARRANTY.

EXCLUSION OF CONSEQUENTIAL AND INCIDENTAL DAMAGES.

PRECOR AND/OR ITS SUPPLIERS SHALL HAVE NO OBLIGATION OR LIABILITY, WHETHER ARISING IN CONTRACT (INCLUDING WARRANTY), TORT (INCLUDING ACTIVE, PASSIVE, OR IMPUTED NEGLIGENCE AND STRICT LIABILITY), OR OTHERWISE, FOR DAMAGE TO THE PRODUCT, PROPERTY DAMAGE, LOSS OF USE, REVENUE OR PROFIT, COST OF CAPITAL, COST OF SUBSTITUTE PRODUCT, ADDITIONAL COSTS INCURRED BY BUYER (BY WAY OF CORRECTION OR OTHERWISE) OR ANY OTHER INCIDENTAL, SPECIAL, INDIRECT, OR CONSEQUENTIAL DAMAGES, WHETHER RESULTING FROM NONDELIVERY OR FROM THE USE, MISUSE OR INABILITY TO USE THE PRODUCT. This exclusion applies even if the above warranty fails of its essential purposes and regardless of whether such damages are sought for breach of warranty, breach of contract, negligence, or strict liability in tort or under any other legal theory. Some states do not allow the exclusion or limitation of incidental or consequential damages, so the above limitation may not apply to you. This warranty gives you specific legal rights, and you may also have other rights, which vary from state to state.

Complete this portion and keep for your records.

Purchased From: _____
(Dealer or store name)

Phone Number: _____
(Dealer or store telephone number)

Product/Model: _____
(For example: Transmitters, Receivers)

Serial Number: _____
(The serial number is found on the shipping container or item.)

Effective 30 June 2006
P/N CX30037-102

Notes:

Notes:

Notes:



A Division of Precor Incorporated
20031 142nd Ave NE
Woodinville, WA USA 98072-4002

Cardio Theater, Precor, and EFX are registered trademarks, and Cardio Theater PVS and Cardio Theater Quick Change Headphone Jack are trademarks of Precor Incorporated.
Copyright 2007 Precor Incorporated.
www.cardiotheater.com

NOTICE:

Due to continuing advancements in technology, Precor Incorporated reserves the right to make changes in hardware, packaging, and any accompanying documentation without prior written notice.

PVS15DT/CNTE7 OMG CX30464-101
Warranty Statement CX30037-102
11 June 2007