

# **CARDIO** *Theater*<sup>®</sup>

## **PVS Stand**

### **Personal Viewing System Stand Assembly Manual**



**Cardio Theatre Holdings, Inc.**  
20031 142nd Ave. NE  
P.O. Box 7202  
Woodinville, WA 98072-4002  
**(800) 776-6695**  
**(425) 486-9292**  
[www.cardiotheater.com](http://www.cardiotheater.com)

# TABLE OF CONTENTS

FCC Compliance Statement.....	2
Parts List.....	2
Stand Assembly.....	3
Cable Management System .....	5
Limited Warranty .....	6
Technical Support.....	7

# **FCC Compliance Statement**

**NOTE:** This equipment has been tested and found to comply with the limits for Part 15 of the FCC Rules. These limits are designed to provide reasonable protection against harmful interference when the equipment is operated in a commercial environment. This equipment generates, uses, and can radiate radio frequency energy and if not installed and used in accordance with the instruction manual, may cause harmful interference to radio communications. However, there is no guarantee that interference will not occur in a particular installation. If this equipment does cause harmful interference to radio or television reception, which can be determined by turning the unit off and on, the user is encouraged to try to correct the interference by one or more of the following measures:

- Reorient or relocate the receiving antenna.
- Increase the separation between the equipment and receiver.
- Connect the equipment into an outlet on a circuit different from that to which the receiver is connected.

Consult Cardio Theater or an experienced radio/TV technician for help.

**WARNING:** To Prevent Fire Or Electrical Shock, Do Not Expose These Appliances To Rain, Moisture, or Excess Heat.

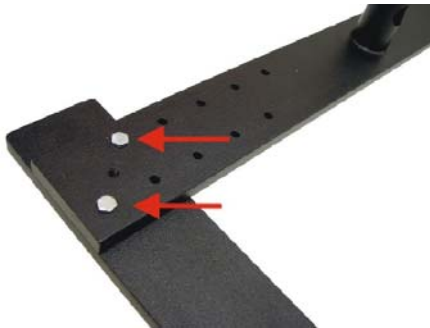
## **Parts List**

### **Stand Box**

- 2 Stand Feet
- 1 Base Cross Bar
- 1 Lower Vertical Tube
- 1 Upper Vertical Tube (Short or Long Model)
- 1 Plastic Base Cover
- 1 Hardware package

# Stand Assembly

## Step 1



Determine width of stand feet in relation to the cardio equipment. Use two 7/8" allen heads to secure leg to stand base assembly.

## Step 2



Insert lower vertical tube over center stub and hand install one 3/16 Allen head screw a few turns into vertical tube. Do not tighten at this time. (Clearance needed for Wires)

## Step 3



Insert plastic base cover over lower vertical tube. Do not fasten down at this time.

## Step 4



Insert upper curved tube into lower tube. Do not install bolts until **step 5** is performed, then adjust upper tube to desired height and install two Allen screws as shown above.

## Step 5



Insert cable assemblies through upper tube opening and bring out lower tube hole as shown.

## Step 6



Mount power supply with 2 wire ties to the base assembly. Plug power supply connector into cable previously installed down vertical tube.

## Step 7



Finish tightening bolt from previous step with 3/16 allen wrench.

Install power cord into power supply

Route coax and AC power plug to center Opening of base cover and make sure to tighten lower bolt before installing cover.

## Step 8



Secure cover with two bolts using 3/16 Allen wrench after bringing out cables.

With cables properly placed in cover slot, secure base cover with 2 Allen head screws provide

## Step 9



Install last remaining Screw in upper tube assembly and double-check all fasteners for tightness.

# Cable Management System



The Optional Cable Management System is used to cover the antenna cable and power cords that run between the individual stands. It consists of a metal bracket that connects to the bottom of the monitor stand and a plastic two-channel extrusion that can be cut to length with common hand tools.

5 foot Cable Management extrusion.



Cable Management Mounting bracket



Bottom view of bracket mounted with four screws



## Installation Instructions

### Step 1

After monitors are mounted to stands and the proper spacing between equipment has been determined, measure distance between stands and cut Cable Management extrusion to length.

### Step 2

Remove Allen Head screw from plastic bottom cover of stand. Place mounting bracket over same hole and re-install the Allen Head screw.

### Step 3

Place Cable Management extrusion into end of bracket and install 4 self tapping screws, two on each side of bracket.

Repeat on opposite side of extrusion.

# Limited Warranty

PLEASE READ THESE WARRANTY TERMS AND CONDITIONS CAREFULLY BEFORE USING YOUR CARDIO THEATER PRODUCT. BY USING THE EQUIPMENT, YOU ARE CONSENTING TO BE BOUND BY THE FOLLOWING WARRANTY TERMS AND CONDITIONS.

## Limited Warranty.

Precor Incorporated ("Precor") warrants all new Cardio Theater products to be free from defects in materials and manufacture for the warranty periods set forth below. The warranty periods commence on the invoice date of the original purchase. This warranty applies only against defects discovered within the warranty period and extends only to the original purchaser of the product. Parts repaired or replaced under the terms of this warranty will be warranted for the remainder of the original warranty period only. To claim under this warranty, the buyer must notify Precor or your authorized Cardio Theater dealer within 30 days after the date of discovery of any nonconformity and make the affected product available for inspection by Precor or its service representative. Cardio Theater products deemed defective by a Precor representative, will be issued a return authorization number. **Precor will not accept returns without a return authorization number.** Precor reserves the right, at their option, to repair or replace the product after verification of defect. Product that fails after the warranty period expires will be repaired or replaced at the current part and labor pricing after authorization from the customer. Repairs are warranted for 90 days. Precor's obligations under this warranty are limited as set forth below.

## Warranty Periods and Coverage.

- |   |        |               |
|---|--------|---------------|
| • Cardio Theater Transmitters<br><i>xTV-T Wireless or Wired Floor Models</i><br><i>xTVFM system transmitter</i> | 3 Year | Parts & Labor |
| • Cardio Theater Receivers<br><i>XTV-R Wireless or Wired Upper Models</i><br><i>XTVFM system receiver</i>       | 1 Year | Parts & Labor |
| • Cardio Theater LCD Screen (PVS)   | 1 Year | Parts & Labor |
| • Cardio Theater Screen Controllers   | 1 Year | Parts & Labor |
| • Quick Change Headphone Jack   | 90 Day | Parts Only    |
| • Optional DVD Player   | 1 Year | Parts         |

## Conditions and Restrictions.

This warranty is valid only in accordance with the conditions set forth below:

- The warranty applies to the Cardio Theater product only while
  - it remains in the possession of the original purchaser and proof of purchase is demonstrated,
  - it has not been subjected to accident, misuse, abuse, improper service, or mechanical, electrical or non-Precor modification,
  - claims are made within the warranty period.
- This warranty does not cover damage or product failure caused by electrical wiring not in compliance with electrical codes or Precor owner's manual specifications, or failure to provide reasonable and necessary maintenance as outlined in the owner's manual. **This warranty excludes misuse or failures of, for example, poor quality CD's, multiple discs inserted in the player, failures caused by home-produced copies of discs, etc.**
- Except in Canada, Precor does not pay labor outside the United States.
- Warranties outside the United States and Canada may vary. Please contact your local Dealer for details.

## This Limited Warranty shall not apply to:

- Software (PROM) version upgrades.
- Normal wear and tear, consumables and cosmetic items, including, but not limited to the following: labels.
- Repairs performed on Cardio Theater products missing a serial number or with a serial tag that has been altered or defaced.
- Service calls to correct installation of the product or instruct owners on how to use the product.
- Pickup and delivery involved with repairs.
- Any labor costs incurred beyond the applicable labor warranty period.
- The user is cautioned that changes or modifications not expressly approved by the manufacturer of the product could void the user's authority to operate the product.

## Complete this portion and keep for your records.

Purchased From: \_\_\_\_\_ Example: Dealer or store name.  
Phone Number: \_\_\_\_\_ Example: Dealer or store telephone number.  
Product/model: \_\_\_\_\_ Example: Transmitters, Receivers  
Serial number: \_\_\_\_\_  
The serial number is found on the shipping container or item.

The warranties provided herein are the exclusive warranties given by Precor and supersede any prior, contrary or additional representations, whether oral or written. ANY IMPLIED WARRANTIES, INCLUDING THE WARRANTY OF MERCHANTABILITY OR FITNESS FOR A PARTICULAR PURPOSE THAT APPLY TO ANY PARTS DESCRIBED ABOVE ARE LIMITED IN DURATION TO THE PERIODS OF EXPRESS WARRANTIES GIVEN ABOVE FOR THOSE SAME PARTS. PRECOR HEREBY DISCLAIMS AND EXCLUDES THOSE WARRANTIES THEREAFTER. Some States do not allow limitations on how long an implied warranty lasts, so the above limitation may not apply to you. PRECOR ALSO HEREBY DISCLAIMS AND EXCLUDES ALL OTHER OBLIGATIONS OR LIABILITIES, EXPRESS OR IMPLIED, ARISING BY LAW OR OTHERWISE, WITH RESPECT TO ANY NONCONFORMANCE OR DEFECT IN ANY PRODUCT, INCLUDING BUT NOT LIMITED TO: (A) ANY OBLIGATION, LIABILITY, RIGHT, CLAIM OR REMEDY IN TORT, WHETHER OR NOT ARISING FROM THE NEGLIGENCE OF PRECOR OR ITS SUPPLIERS (WHETHER ACTIVE, PASSIVE OR IMPUTED); AND (B) ANY OBLIGATION, LIABILITY, RIGHT, CLAIM OR REMEDY FOR LOSS OF OR DAMAGE TO ANY PRODUCT. This disclaimer and release shall apply even if the express warranty set forth above fails of its essential purpose.

## Exclusive Remedies.

For any product described above that fails to conform to its warranty, Precor will provide, at their option, one of the following: (1) repair; (2) replacement; or (3) refund of the purchase price. Limited Warranty service may be obtained by contacting the authorized dealer from whom you purchased the item. Precor compensates Servicers for warranty trips within their normal service area to repair commercial product at the customer's location. You may be charged a trip charge outside the service area. THESE SHALL BE THE SOLE AND EXCLUSIVE REMEDIES OF THE BUYER FOR ANY BREACH OF WARRANTY.

## EXCLUSION OF CONSEQUENTIAL AND INCIDENTAL DAMAGES.

PRECOR AND/OR ITS SUPPLIERS SHALL HAVE NO OBLIGATION OR LIABILITY, WHETHER ARISING IN CONTRACT (INCLUDING WARRANTY), TORT (INCLUDING ACTIVE, PASSIVE, OR IMPUTED NEGLIGENCE AND STRICT LIABILITY), OR OTHERWISE, FOR DAMAGE TO THE PRODUCT, PROPERTY DAMAGE, LOSS OF USE, REVENUE OR PROFIT, COST OF CAPITAL, COST OF SUBSTITUTE PRODUCT, ADDITIONAL COSTS INCURRED BY BUYER (BY WAY OF CORRECTION OR OTHERWISE) OR ANY OTHER INCIDENTAL, SPECIAL, INDIRECT, OR CONSEQUENTIAL DAMAGES, WHETHER RESULTING FROM NONDELIVERY OR FROM THE USE, MISUSE OR INABILITY TO USE THE PRODUCT. This exclusion applies even if the above warranty fails of its essential purposes and regardless of whether such damages are sought for breach of warranty, breach of contract, negligence, or strict liability in tort or under any other legal theory. Some states do not allow the exclusion or limitation of incidental or consequential damages, so the above limitation may not apply to you.

This warranty gives you specific legal rights, and you may also have other rights, which vary from state to state.

Effective 21 January 2005  
P/N CX30037-101

## Disclaimer and Release.

# **Technical Support**

## **Technical Support Number**

**Telephone** 1-800-776-6695

## **Technical Support Hours:**

7:00 AM to 3:30 PM Monday through Friday PST.

## **Write To:**

Cardio Theatre Holdings, Inc.  
20031 142<sup>nd</sup> Ave NE  
PO Box 7202  
Woodinville, WA 98072-4002

## **Notice**

Due to continuing advancements in technology, Cardio Theatre Holdings, Inc. reserves the right to make changes in hardware, packaging, and any accompanying documentation without prior written notice.

Cardio Theater PVS is a registered trademark of Cardio Theatre Holdings, Inc.

© 2004 Cardio Theatre Holdings, Inc., all rights reserved