

Treadmill Integrated LCD Screen Option

Cardio Theater Integrated Bracket Assembly Instructions

Table of Contents

1	Before You Begin	4
	Obtaining Service	4
	Unpacking the Equipment	4
	Important Safety Instructions	4
2	Preparations	5
	Required Tools	5
	Installation Requirements	5
	Assembly Tips	5
3	Install the Bracket Assembly	6
4	Attach the LCD Screen	10
5	Reinstall the Bracket Cover	12
6	Connect the Controller and the Cables	13

1

Before You Begin

Thank you for adding the Precor Cardio Theater Integrated LCD Screen Option to your treadmill. This option will add a new dimension to your workout.

For proper installation, please read this guide thoroughly and follow the assembly instructions.

Obtaining Service

For information about product operation or service, see the Precor web site at www.precor.com. Should you need more information regarding customer support numbers or a list of Precor authorized service centers, visit the Precor website at www.precor.com/contact.

Unpacking the Equipment

The Cardio Theater Integrated Bracket for the LCD Screen is shipped in one box with the following items:

- Bracket assembly
- Power extension cable
- Four Phillips-head screws
- Rubber adapter mounts

If any items are missing, contact the dealer from whom you purchased the unit or call Precor Customer Support .

Important: To complete the assembly of the Cardio Theater Integrated Bracket, you need the Cardio Theater Integrated LCD Screen option, which is shipped in a separate box. Included with the screen are two cables — coaxial/power cable and controller cable — which you will need during the assembly process.

Important Safety Instructions

When using exercise equipment, basic precautions should always be taken, including the following:

- **Read all instructions before using the unit.** These instructions are written to ensure your safety and to protect the equipment.
- **Use the equipment only for its intended purpose.** Do not use accessory attachments that are not recommended by the manufacturer, as such attachments might cause injuries.
- **Always check the unit before each use.** Make sure that all fasteners and cables are secure and in good working condition.

Important: The important safety instructions written here reflect a portion of what is found in the Precor treadmill owner's manuals. Please review and follow the safety instructions found there.

IMPORTANT SAFETY INSTRUCTIONS

2

Preparations

Important: To attach the Cardio Theater Integrated Bracket, ask another adult for help. Do not attempt the assembly by yourself.

Remember to read and follow the instructions in this guide. If you do not assemble the Cardio Theater Integrated Bracket according to these guidelines, you could void the Precor Limited Warranty.

Required Tools

Obtain these tools before assembly:

- Standard hex key set
- Phillips-head screwdriver
- Standard torque wrench

Installation Requirements

Review these installation requirements before assembly:

- The Cardio Theater Integrated Bracket is built to VESA MIS-D, 100/75 standard interface specifications.
- Provide ample space around the treadmill where you plan to install the Cardio Theater Integrated Bracket. Open space around the unit allows for easier access and installation.
- Open the box and assemble components in the sequence presented in this guide.
- Leave room for adjustments. Tighten fasteners (bolts, nuts, and screws) so the unit is stable, but leave room for adjustments. Do not fully tighten fasteners until instructed in the assembly steps to do so.

Assembly Tips

- Read all the notes on each page before completing that step.
- While you may be able to assemble the Cardio Theater Integrated Bracket using the illustrations only, important safety notes and other tips are included in the text.

The assembly of the Cardio Theater Integrated Bracket takes about ½ hour to complete.

3

Install the Bracket Assembly

Important: Assemble the fasteners throughout these instructions as detailed in each step. When in doubt, use the illustrations for help. **Do not fully tighten fasteners until instructed to do so.**

1. Remove the bracket cover.

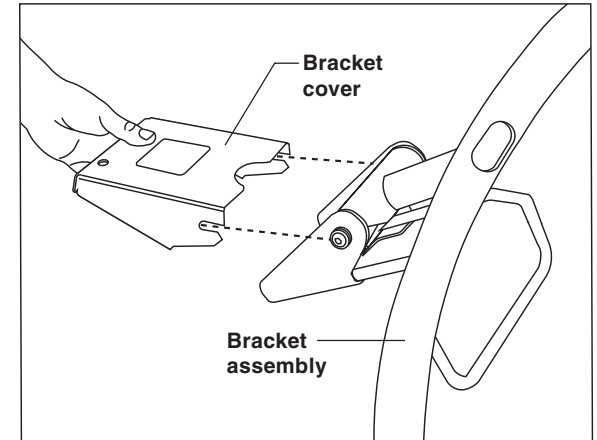
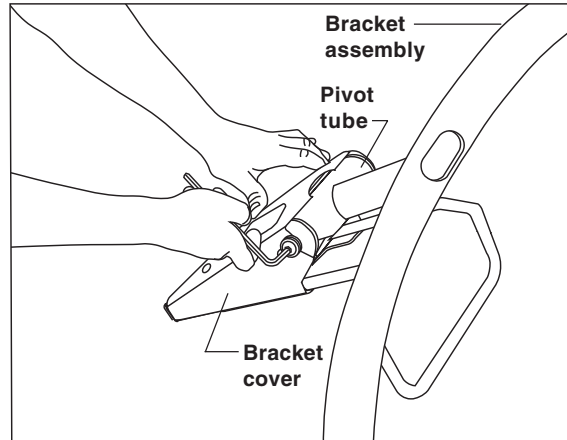
Loosen the bolts on the pivot tube using a $\frac{7}{32}$ -inch hex key. Pull the bracket cover away from the assembly. Set it aside.

2. Feed the cables through the center tube of the bracket assembly.

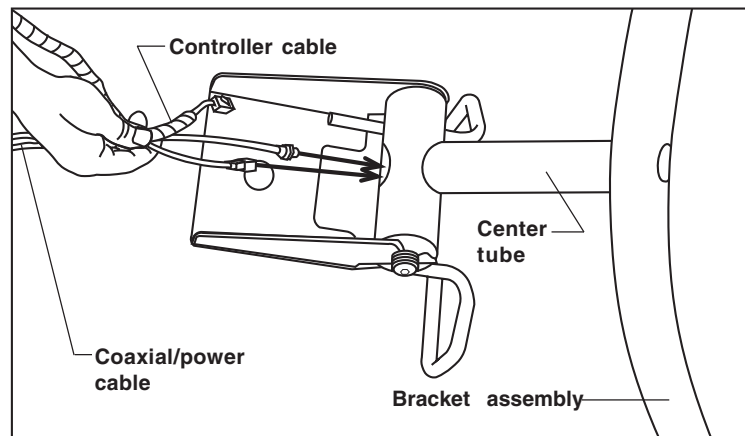
Locate the coaxial/power cable and controller cable provided with the LCD Screen. Feed the end of the coaxial/power cable with its two connectors and the controller cable through the top hole in the center tube of the bracket assembly. Leave about 3 feet of the cables hanging out of the hole at the top of the bracket.

Note: The 3 feet (1 meter) of cables hanging out of the upper hole consist of the controller cable and the end of the coaxial/power cable with coaxial and power connectors. These cables will be attached to the back of the LCD Screen.

1



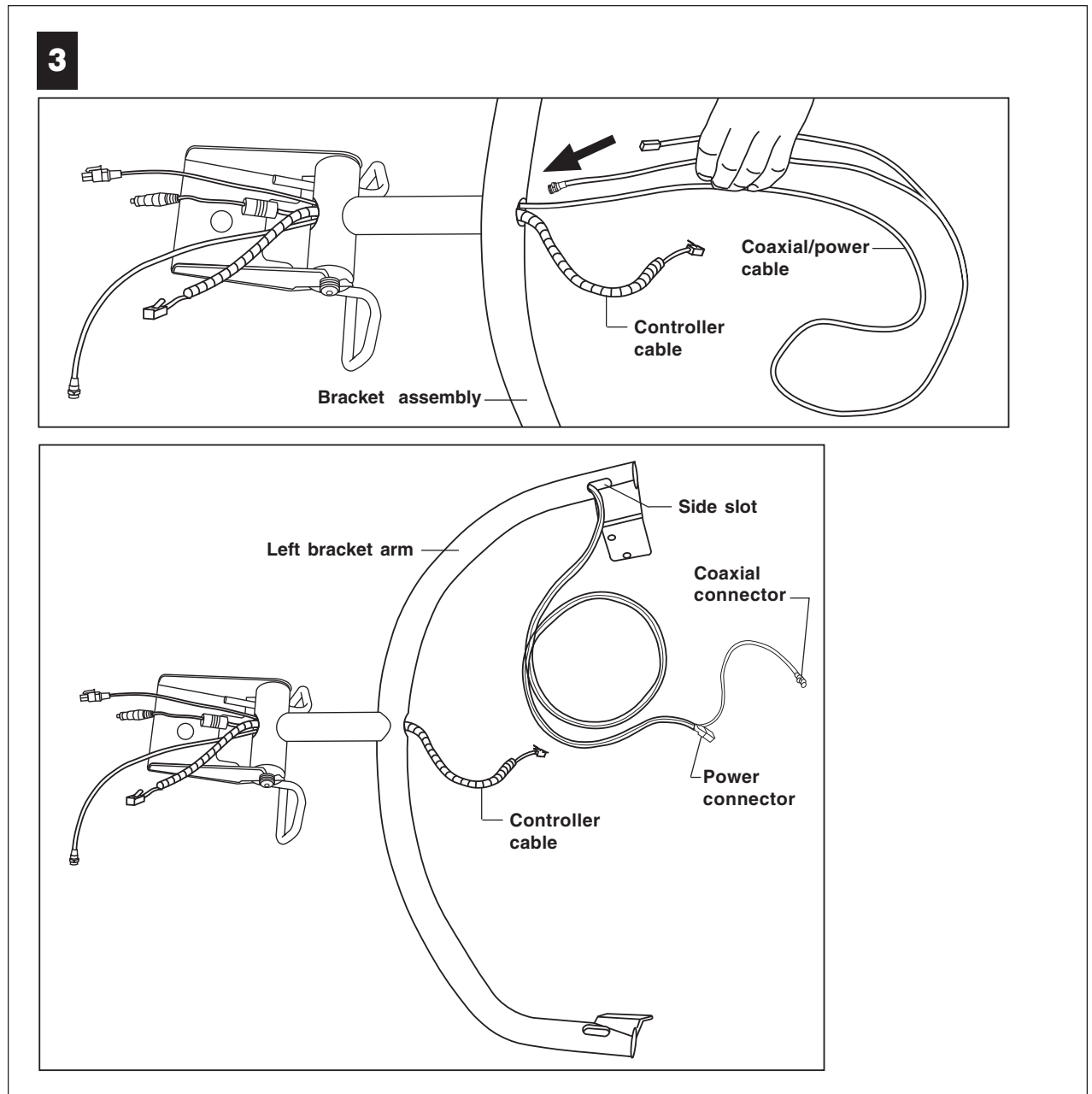
2



3. Continue to feed the coaxial/power cable and its two connectors through the left bracket arm.

Feed the coaxial/power cable and its two connectors back through the hole at the base of the center tube and down the left arm of the bracket assembly. Pull the cables from the side slot. Continue pulling until no cable (except the coiled controller cable) protrude from the hole at the base of the center tube.

Important: Do not feed the coiled controller cable through the bracket arm. It can be left hanging from the base of the center tube.



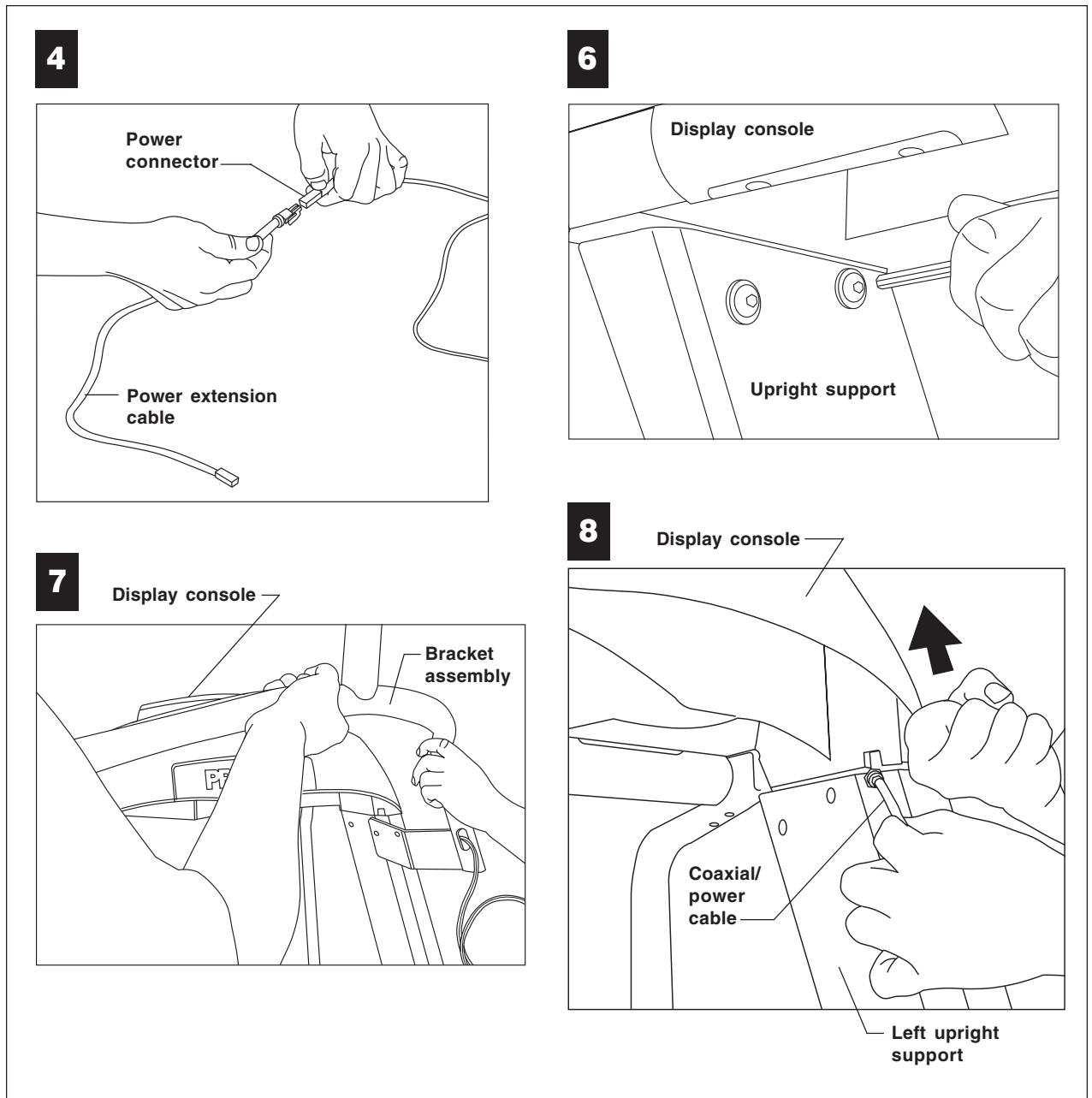
4. Attach the power extension cable to the power connector.
5. Set the bracket assembly aside.
6. Remove the fasteners that secure the display console to the treadmill.

Use a hex key to remove the four screws and washers that secure the display console to the upright supports on the treadmill. Keep the washers on the screws and set them aside.

Important: Ask someone for help before attempting the next step.

7. Position the bracket assembly.
Ask your assistant to lift the bracket assembly and position it parallel along the back of the display console.
8. Thread the coaxial/power cable through the left upright support.

While your assistant holds the bracket assembly, carefully lift the left side of the display console to expose the slot at the bottom edge of the console. Thread the coaxial/power cable with its two connectors (and power extension cable) through the slot and down into the left upright support. Continue feeding the cable through the upright support until both cable connectors exit the opening at the base.



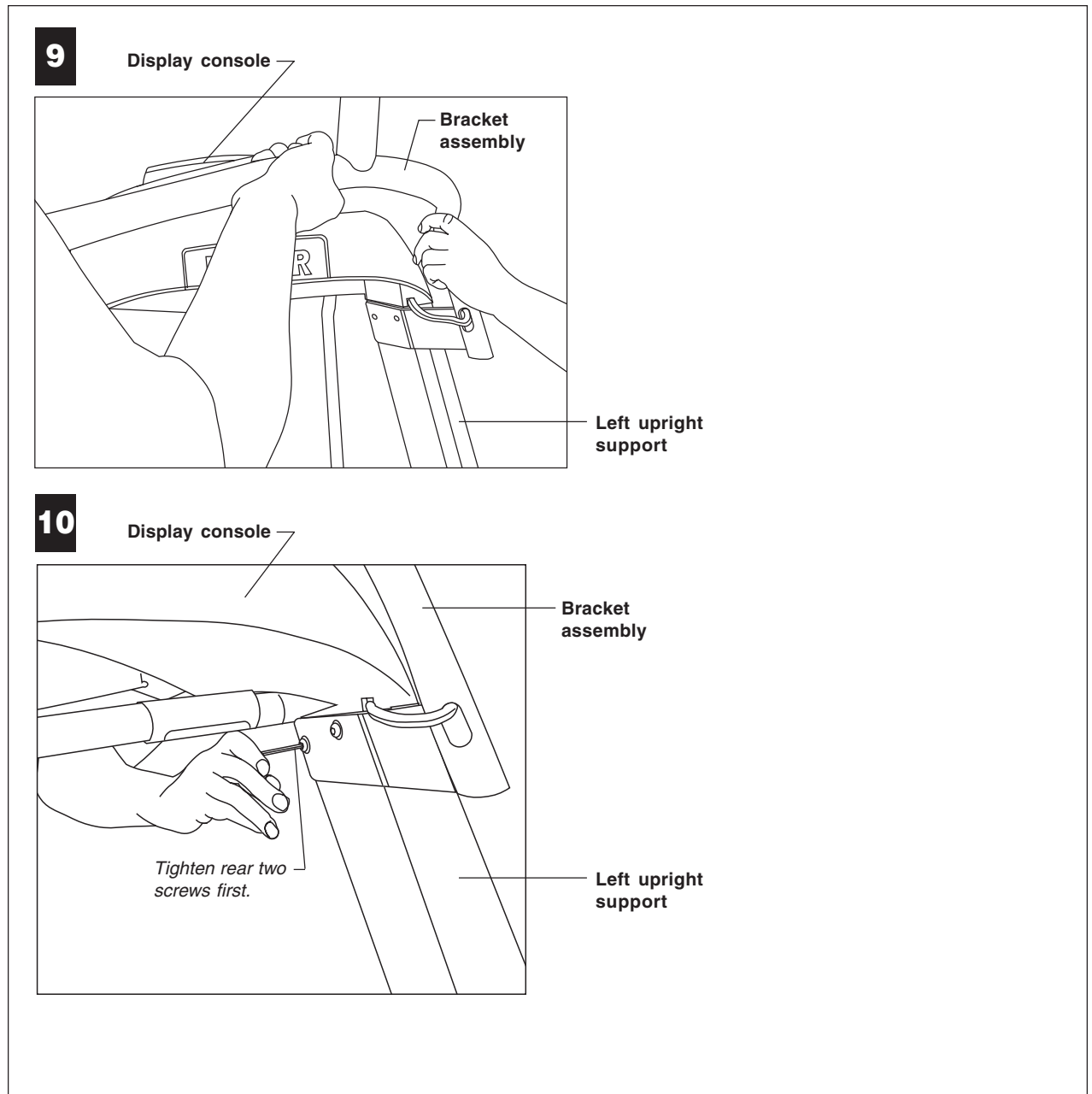
9. Align the mounting holes.

Ask your assistant to slide the bracket assembly to the inside of the upright supports and align the mounting holes.

Important: Continue feeding the remaining cable so that no cable protrudes or gets pinched while mounting the bracket.

10. Replace the fasteners.

Use a hex key to replace the four screws and washers removed in step 6. For alignment purposes, tighten the rear two screws first. Wrench tighten the remaining two fasteners so that the display console and bracket assembly are securely attached to the upright supports on the treadmill.



4 Attach the LCD Screen

Important: The screen spacer is used only for the Cardio Theater PVS4/5/15 LCD Screen.

1. To protect the LCD Screen for the next few steps, place it screen side down on a clean work surface.

Important: Use proper materials to protect the LCD Screen while you remove the plastic cover and metal mounting bracket from the back of the LCD Screen.

2. Remove the plastic cover.

Use a Phillips-head screwdriver to remove the two screws holding the plastic cover to the LCD screen. Discard the plastic cover and the screws.

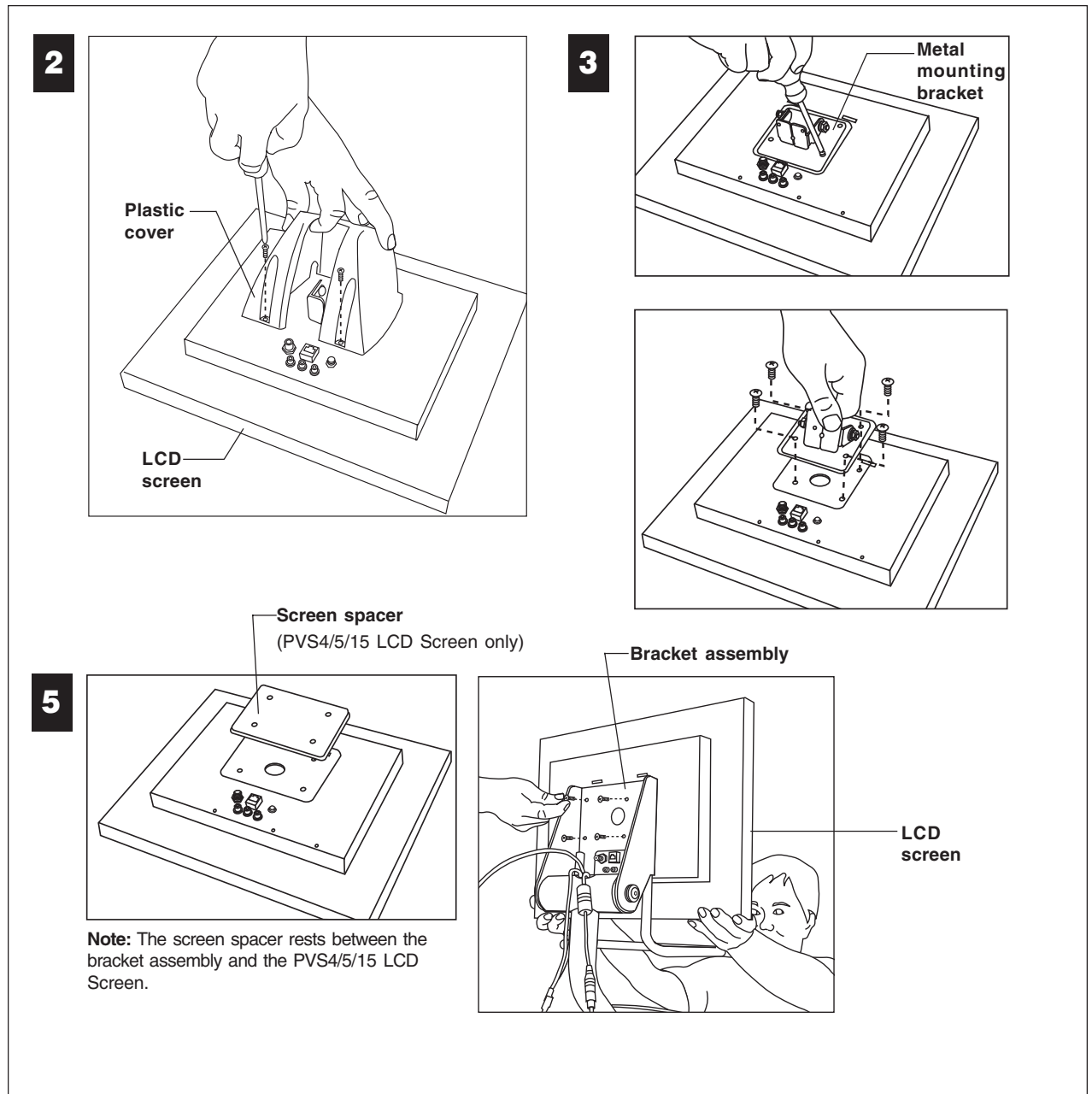
3. Remove the metal mounting bracket.

Remove the four screws securing the metal mounting bracket. Discard the mounting bracket and the four screws.

4. Retrieve four new Phillips-head screws from the bracket assembly package.

Note: Use the longer screws if attaching the screen spacer with the PVS4/5/15 LCD Screen.

5. Attach the LCD Screen to the bracket assembly. If you have the Cardio Theater PVS4/5/15 LCD Screen, you will need to insert the screen spacer between the screen and bracket to ensure a proper fit.



6. Fully tighten the bottom two screws.

Use a Phillips-head screwdriver to fully tighten the bottom two screws. Leave the top two screws finger tight.

7. Connect the coaxial/power cable connectors to the LCD Screen.

Attach the connectors—coaxial and power—to the back of the LCD screen.

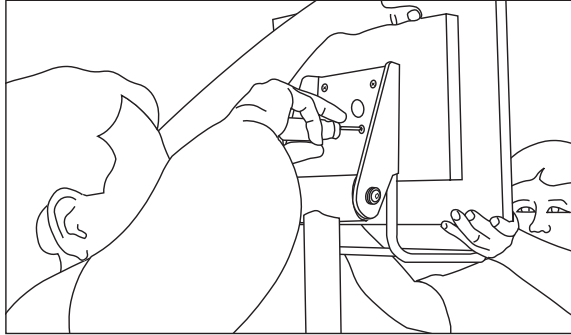
8. Feed the DVD connector back into the pivot tube compartment so it is not hanging out. The DVD Option is not available for the treadmill.

9. Connect the controller cable.

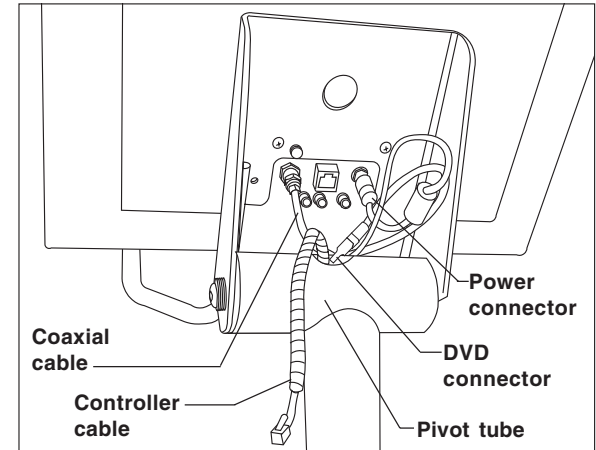
Attach it to the back of the LCD Screen. You will hear a definite click as the connector snaps into place inside its receptacle.

Note: For more information about cable connections, see the Cardio Theater LCD Screen manual.

6



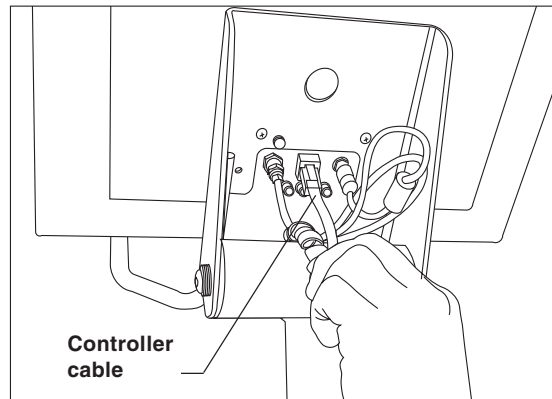
7



8

Note: Feed the DVD connector back into the pivot tube compartment so it is not hanging out. The DVD Option is not available with the treadmill.

9



5

Reinstall the Bracket Cover

1. Prepare the fasteners for reinstalling the bracket cover.

Push the washers and bearings toward the bolt heads so there is room for the bracket cover to slide in flush against the pivot tube.

Important: Keep the bracket cover flanges flush with the pivot tube. The washers and bearings need to remain on the outside of the bracket flanges.

2. Replace the bracket cover.

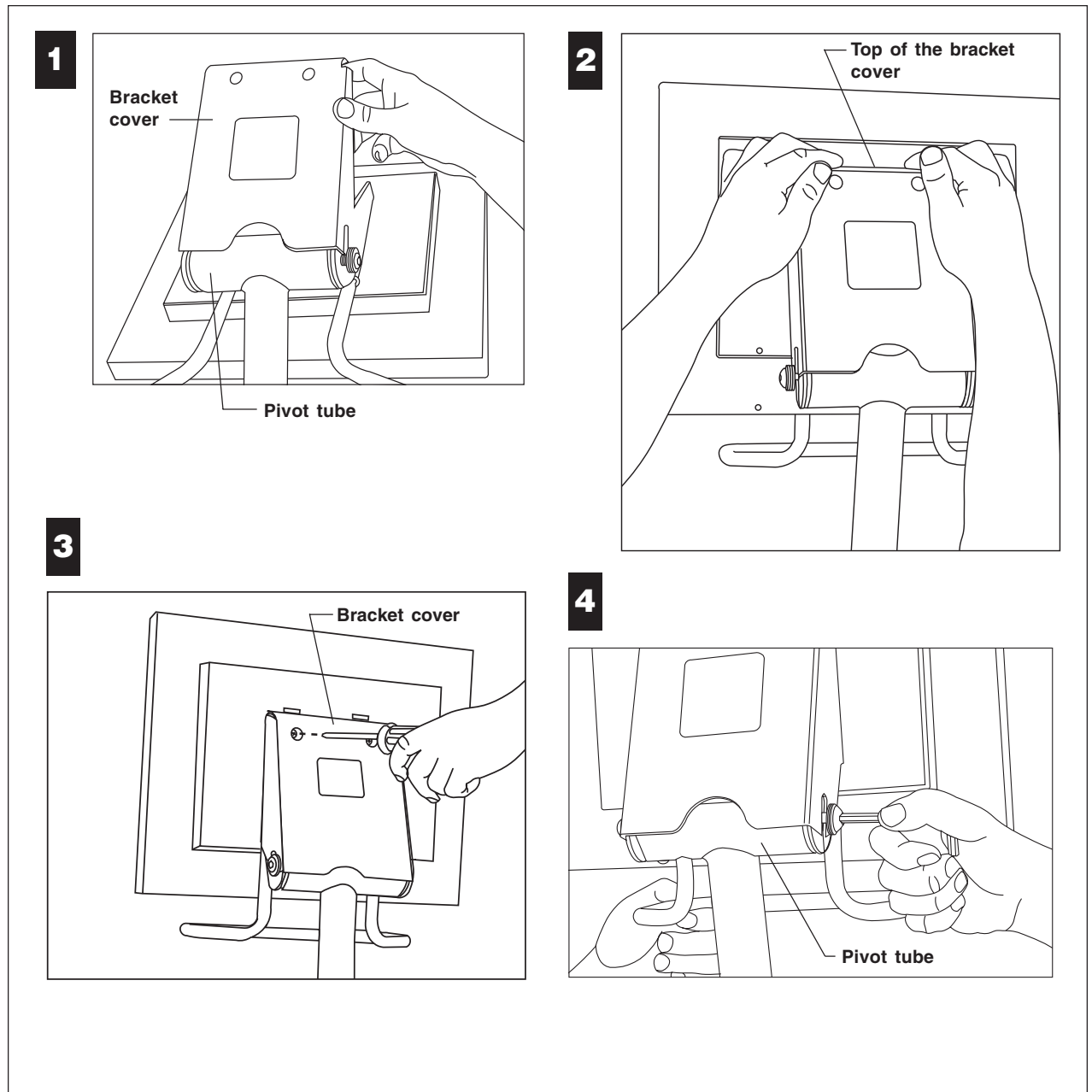
Hold the bracket cover above the pivot tube. Apply pressure to the top of the bracket cover while you slide it into position.

3. Tighten the top two screws on the back of the LCD Screen.

Use a Phillips-head screwdriver to fully tighten the top two screws on the back of the LCD Screen. Access holes have been drilled through the bracket cover.

4. Secure the bracket cover.

Using a torque wrench and a $\frac{7}{32}$ -inch hex key, retighten the two pivot tube fasteners to 120 in-lbs.

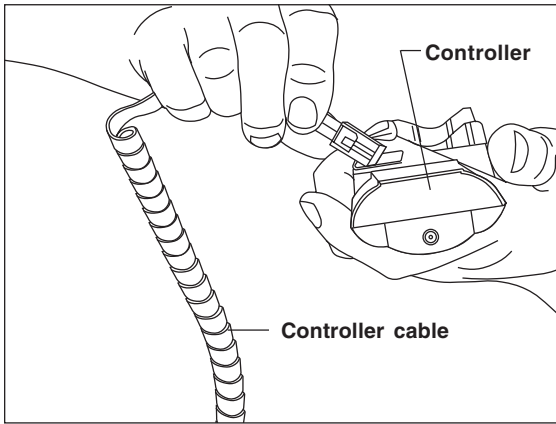


6

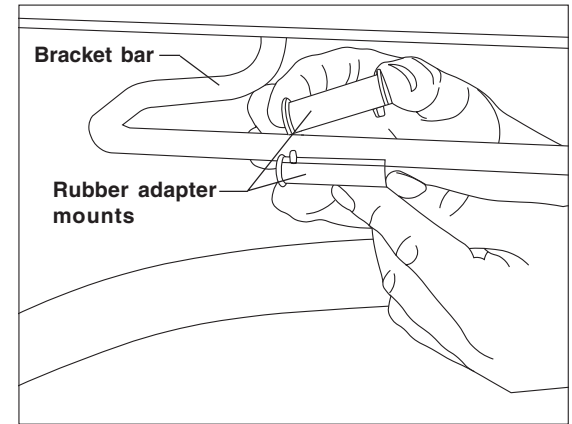
Connect the Controller and the Cables

Note: Retrieve the rubber adapter mounts from the bracket assembly package. Retrieve the controller from the LCD Screen package.

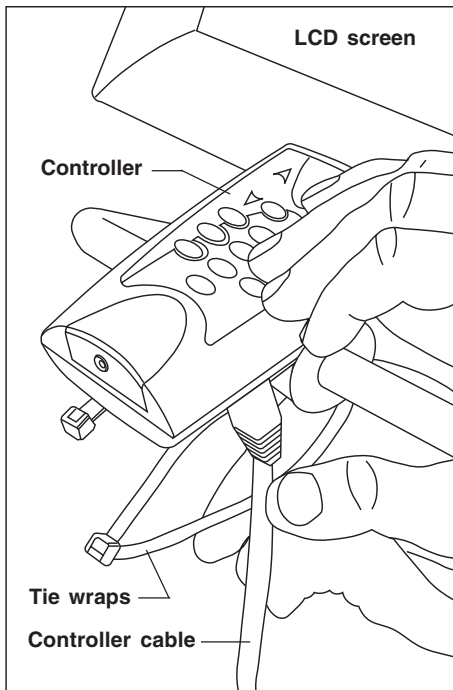
1. Connect the controller cable to the controller.
A definite click is heard when the connector snaps into place inside its receptacle.
2. Place the rubber adapter mounts around the center of the bracket bar.
3. Secure the controller.
Use two tie wraps to secure the controller to the rubber adapter mounts and bracket bar.
4. At the base of the treadmill, plug the power and coaxial connectors on the coaxial/power cable into the strip designed for Cardio Theater use.
Note: For more information, refer to the Cardio Theater LCD Screen manual.



1



2



3



Precor Incorporated
20031 142nd Avenue NE
P.O. Box 7202
Woodinville, WA USA 98072-4002

Precor and Cardio-Theater are registered trademarks of Precor Incorporated.
Specifications subject to change without notice.
Copyright 2005 Precor Incorporated.
Precor web site: www.precor.com

NOTICE:

Precor is widely recognized for its innovative, award winning designs of exercise equipment. Precor aggressively seeks U.S. and foreign patents for both the mechanical construction and the visual aspects of its product design. Any party contemplating the use of Precor's product designs is hereby forewarned that Precor considers the unauthorized appropriation of its proprietary rights to be a very serious matter. Precor will vigorously pursue all unauthorized appropriation of its proprietary rights.

Cardio Theater Integrated Bracket Assembly Lit Kit # CX47837-102
Treadmills
15 June 2005