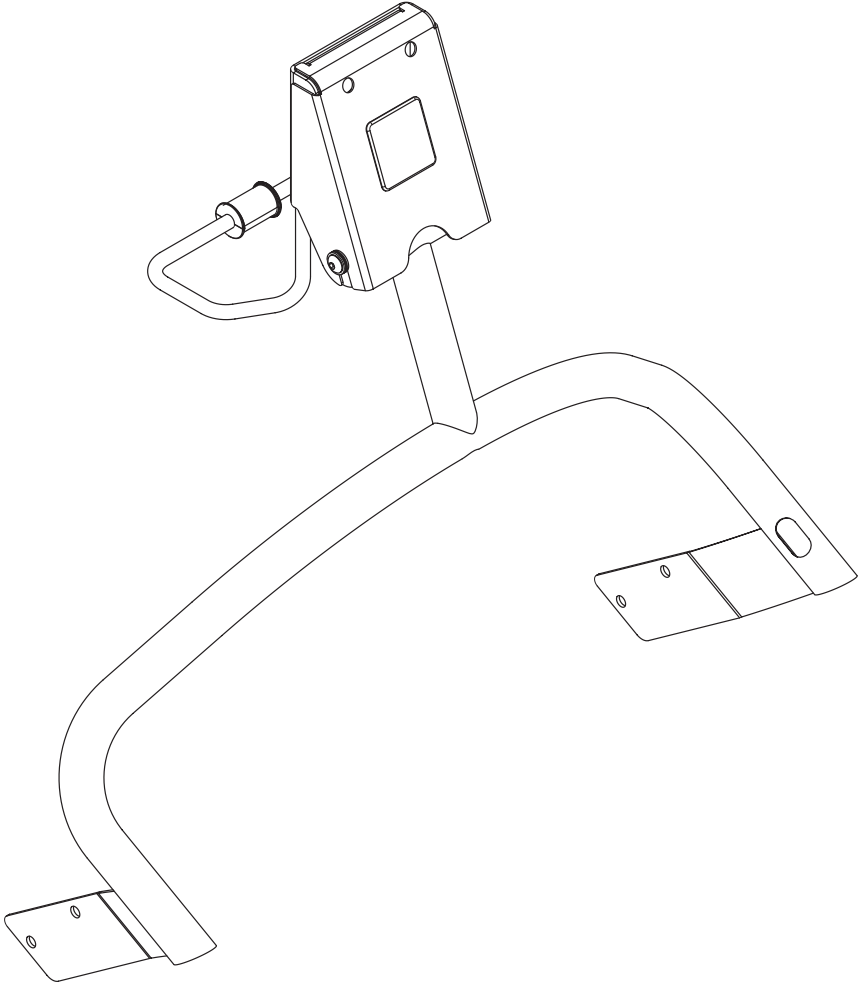


**PRECOR**<sup>®</sup><sub>USA</sub>  
move beyond<sup>®</sup>



# **Treads C93x Series**

Cardio Theater LCD Screen Option—Bracket Assembly

## Table of Contents

<b>1</b>	<b>Before You Begin .....</b>	<b>3</b>
	Obtaining Service .....	3
	Unpacking the Equipment .....	3
	Important Safety Instructions .....	3
<b>2</b>	<b>Preparations .....</b>	<b>4</b>
	Required Tools .....	4
	Installation Requirements .....	4
	Assembly Tips .....	4
<b>3</b>	<b>Install the Bracket Assembly .....</b>	<b>5</b>
<b>4</b>	<b>Attach the LCD Screen .....</b>	<b>9</b>
<b>5</b>	<b>Reinstall the Bracket Cover .....</b>	<b>10</b>
<b>6</b>	<b>Attach the Controller and Connect the Power Cables .....</b>	<b>12</b>

# 1

## Before You Begin

Thank you for adding the Precor Cardio Theater LCD Screen Option to your C93x standard commercial treadmill. This option will add a new dimension to your workout.

For proper installation, please read this guide thoroughly and follow the assembly instructions.

### Obtaining Service

For information about product operation or service, refer to the Precor web site at [www.precor.com](http://www.precor.com) or contact an authorized Precor dealer or a Precor factory-authorized service company. For information about product operation or service, call an authorized Precor Commercial Products Customer Support Representative at 1-888-665-4404.

### Unpacking the Equipment

The Cardio Theater Bracket is shipped in one box with the following items:

- Bracket assembly
- Power extension cable
- Four Phillips-head screws
- Rubber adapter mounts

If any items are missing, contact the dealer from whom you purchased the unit or call a Precor Commercial Products Customer Support Representative.

**Important:** To complete the assembly of the Cardio Theater Bracket, you need the Cardio Theater LCD Screen, which is shipped in a separate box.

### Important Safety Instructions

When using exercise equipment, basic precautions should always be taken, including the following:

- **Read all instructions before using the Cardio Theater LCD Screen Option. These instructions are written to ensure your safety and to protect the equipment.**
- **Use the equipment only for its intended purpose. Do not use accessory attachments that are not recommended by the manufacturer: such attachments might cause injuries.**
- **Always check the unit before each use. Make sure that all fasteners and cables are secure and in good working condition.**

**Important:** The important safety instructions written here reflect a portion of what is found in the Precor treadmill owner's manuals. Please review and follow the safety instructions found in your owner's manual.

# 2

## Preparations

**CAUTION: To attach the Cardio Theater Bracket, ask an adult for help. Do not attempt the assembly by yourself.**

Remember to read and follow the instructions in this guide. If you do not assemble the Cardio Theater Bracket according to these guidelines, you could void the Precor limited warranty.

### Required Tools

You need to obtain these tools before assembling the unit:

- Standard hex key set
- Phillips-head screwdriver
- Standard torque wrench and a  $\frac{7}{32}$ -inch hex key

### Installation Requirements

Follow these installation requirements when assembling the unit:

- **The Cardio Theater Bracket is built to VESA MIS-D, 100/75 standard interface specifications.**
- **Provide ample space around the treadmill.** Open space around the machine allows for easier access.
- **Open the box and assemble components in the sequence presented in this guide.**
- **Leave room for adjustments.** Tighten fasteners (bolts, nuts, and screws), so the unit is stable, but leave room for adjustments. Do not fully tighten fasteners until instructed (in the assembly steps) to do so.

### Assembly Tips

- Read all the notes on each page before completing that step.
- While you may be able to assemble the Cardio Theater Bracket using the illustrations only, important safety notes and other tips are included in the text.

The assembly of the Cardio Theater Bracket takes about  $\frac{1}{2}$  hour to complete.

# 3

## Install the Bracket Assembly

**Important:** Assemble the fasteners throughout these instructions as detailed in each step. When in doubt, use the illustrations for help. **Do not fully tighten fasteners until instructed to do so.**

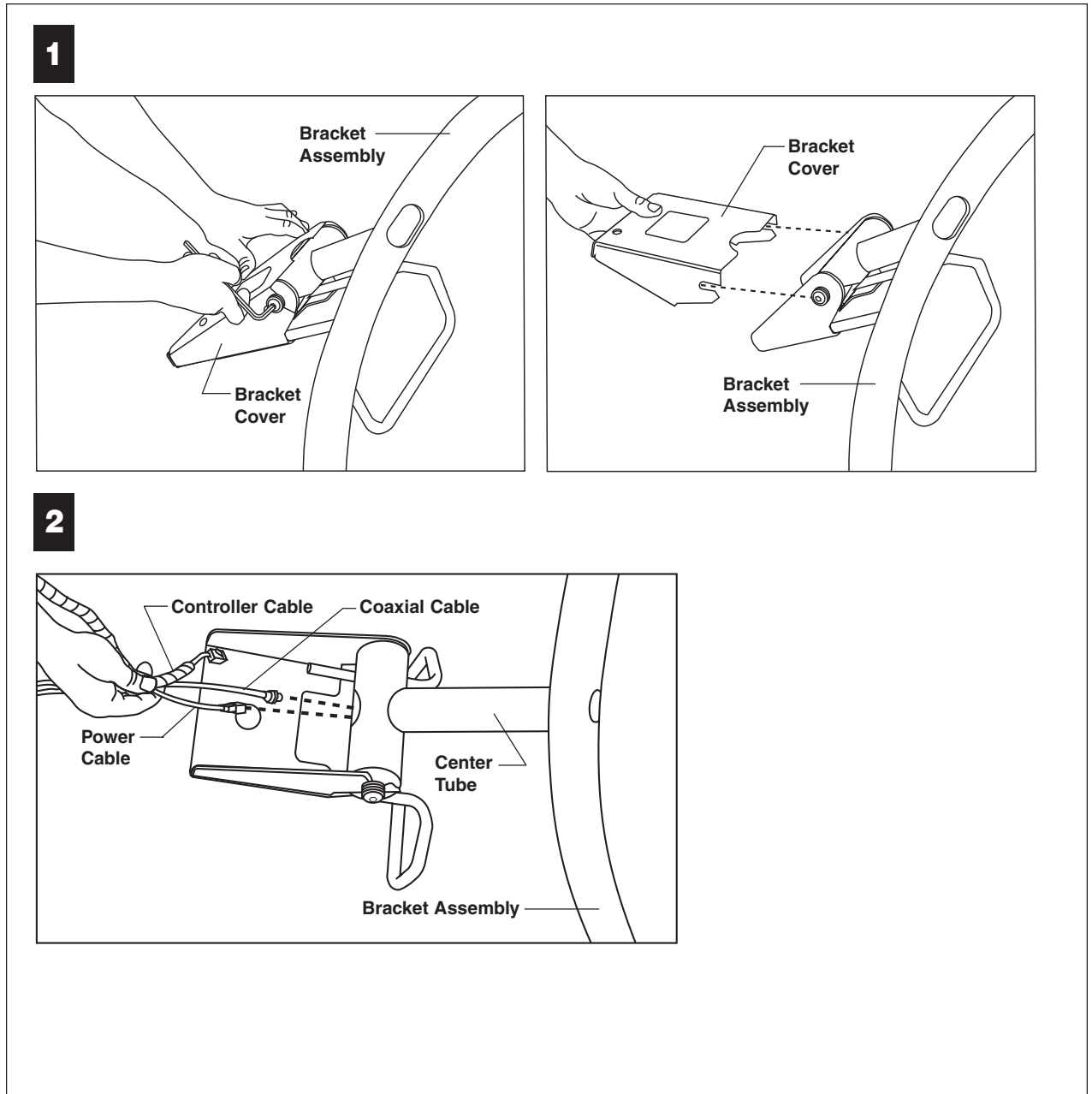
1. Remove the bracket cover.

Loosen the bolts on the axle tube using a  $\frac{7}{32}$ -inch hex key. Pull the bracket cover away from the assembly. Set it aside.

2. Feed the cables through the upright portion of the bracket.

Locate the ends of the coaxial and power cables (provided with the Cardio Theater LCD Screen). Feed those two cables along with the Controller cable (coiled cable found with the Controller Box) through the top hole in the center tube of the bracket assembly. Leave about 3 feet of cable hanging out of the hole at the top of the bracket.

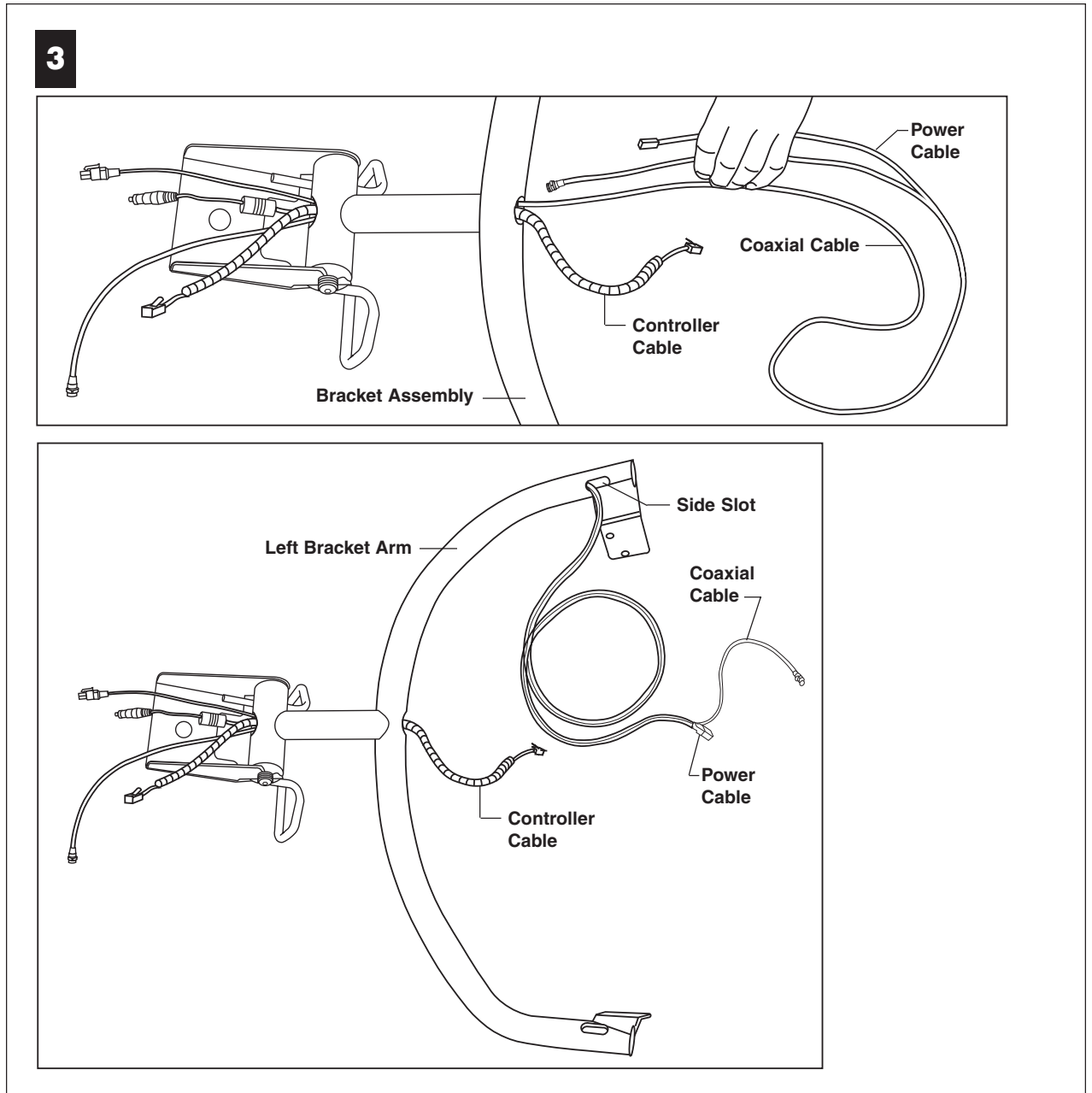
**Note:** The 3 feet (1 meter) of cable hanging out of the upper hole consists of the coaxial, DVD, power, and controller cables. These cables will be attached to the back of the LCD Screen.



3. Continue to feed the cables through the left bracket arm.

Feed the two cables (coaxial and power) back through the hole at the base of the center tube and down the left arm of the bracket assembly. Pull the cables from the side slot. Continue pulling until no cables (except the coiled Controller cable) protrude from the hole at the base of the center tube.

**Important:** Do not feed the coiled Controller cable through the bracket arm. It can be left hanging from the base of the center tube.



4. Attach the extension to the power cable.

Remove the extension cable from the bracket assembly box and attach it to the end of the Cardio Theater power cable (provided with the Cardio Theater LCD Screen).

5. Set the bracket assembly aside.

6. Remove the fasteners that secure the display console to the treadmill.

Use a ¼-inch hex key to remove the four screws and washers that secure the display console to the upright supports on the treadmill. Keep the washers on the screws and set them aside.

**Important:** Ask someone for help before attempting the next step.

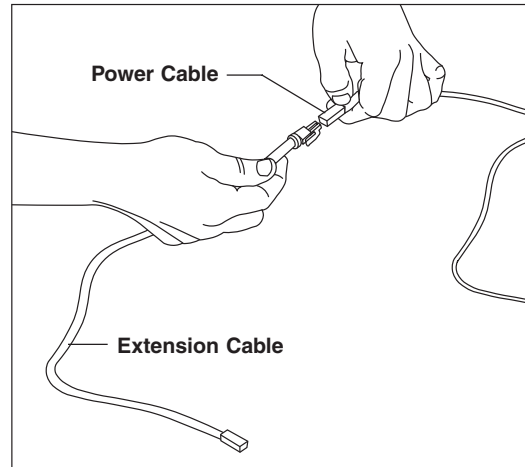
7. Position the bracket assembly.

Ask your assistant to lift the bracket assembly and position it parallel along the back of the display console.

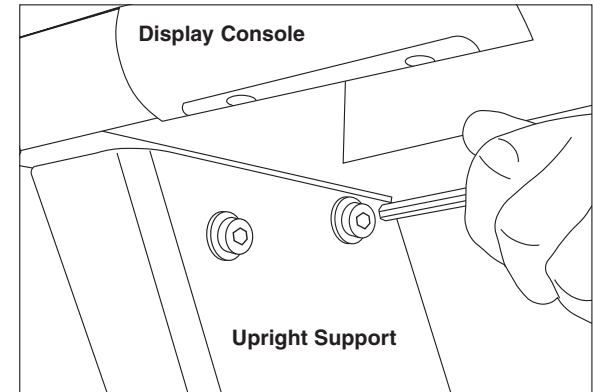
8. Thread the cables through the left upright support.

Thread the two cable ends through the slot and down into the left upright support. Continue feeding the cables through the upright support until both ends of the two cables exit the opening at the base.

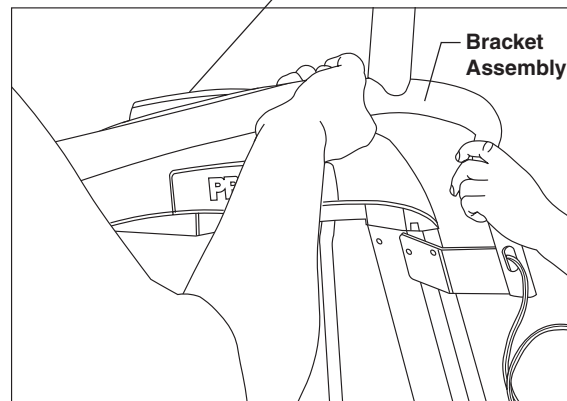
4



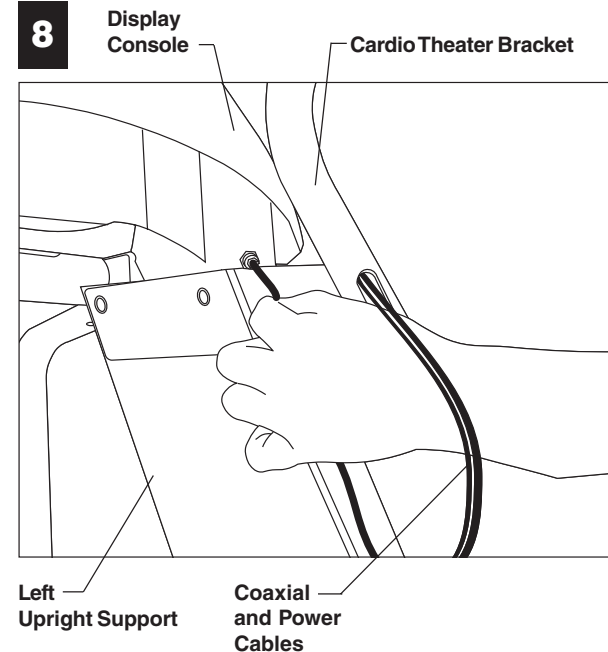
6



7



8



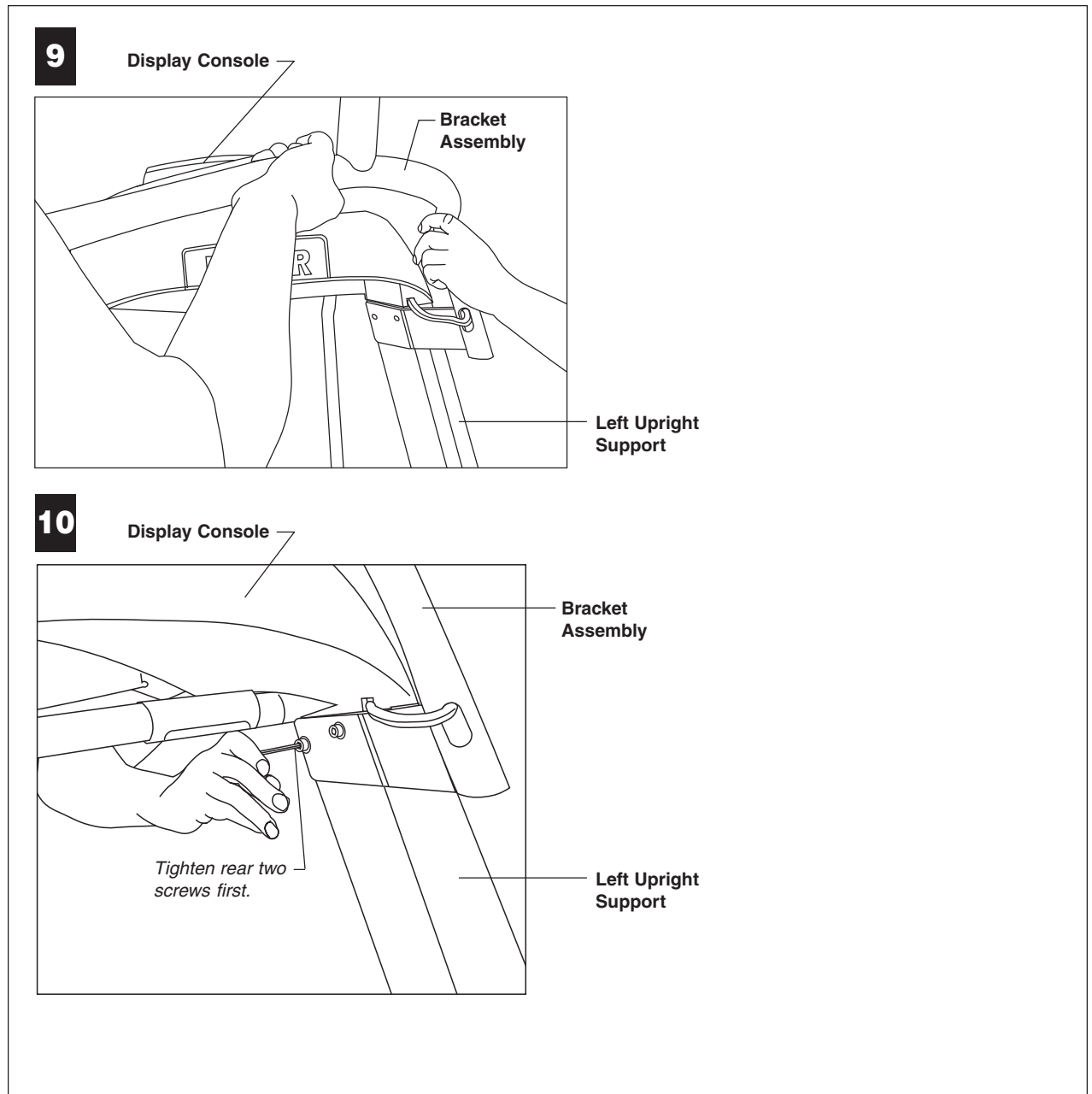
9. Align the mounting holes.

Ask your assistant to slide the bracket assembly to the inside of the upright supports and align the mounting holes.

**Important:** Continue feeding the remaining cable so that no cable protrudes or gets pinched while mounting the bracket.

10. Replace the fasteners.

Use a ¼-inch hex key to replace the four screws and washers removed in step 6. For alignment purposes, tighten the rear two screws first. Wrench tighten the remaining two fasteners so that the display console and bracket assembly are securely attached to the upright supports on the treadmill.



# 4

## Attach the LCD Screen

1. To protect the LCD Screen, place it (screen side down) on a clean work surface.

**Important:** Use proper materials to protect the LCD Screen while you remove the plastic cover and mounting bracket from the backside of the LCD Screen.

2. Remove the plastic cover.

Use a Phillips-head screwdriver to remove the two screws holding the plastic cover to the console. Discard the plastic cover and the screws.

3. Remove the metal mounting bracket.

Remove the four screws securing the metal mounting bracket. Discard the mounting bracket and the four screws.

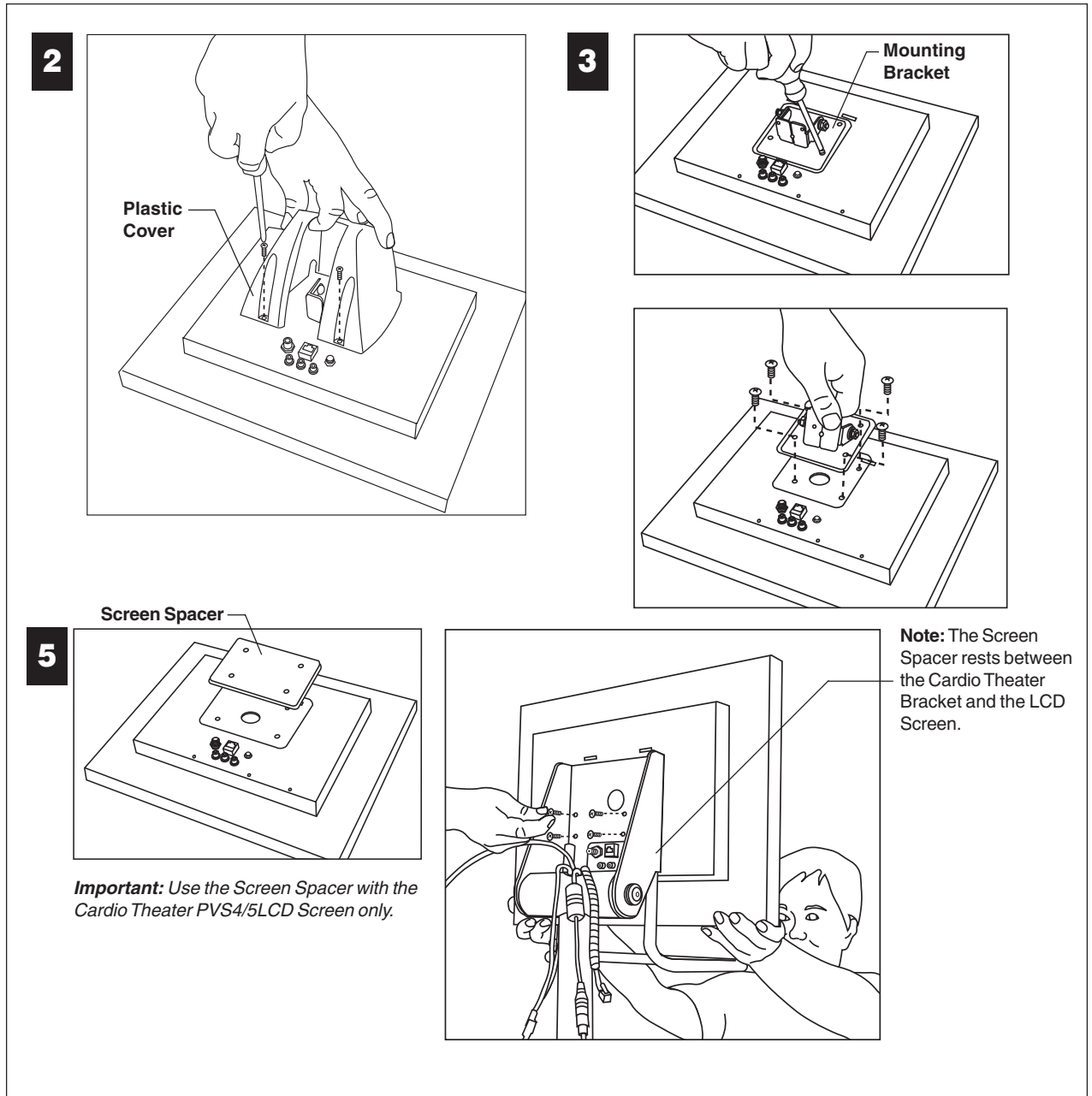
**Important:** The Screen Spacer is only used for the Cardio Theater PVS4/5LCD Screen. If you do not have this screen, attach the LCD Screen without the Screen Spacer.

4. Retrieve four new Phillips-head screws from the bracket assembly package.

**Note:** Use the longer screws if attaching the Screen Spacer.

5. Attach the Screen Spacer and LCD Screen.

Ask your assistant for help. Have your assistant hold the Screen Spacer and LCD Screen against the Cardio Theater Bracket while you align the mounting holes. Insert all four screws and finger tighten.



6. Tighten the bottom two screws.

Use a Phillips-head screwdriver to fully tighten the bottom two screws. Leave the top two screws finger tight.

7. Connect the LCD Screen cables.

Attach the cables (coaxial, DVD, and power) to the back of the console.

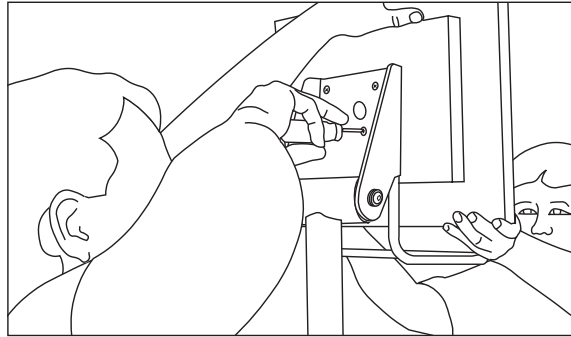
**Note:** The DVD Option is not available for the treadmill. Feed the DVD cable back into the axle tube compartment so it isn't hanging out.

8. Connect the controller cable.

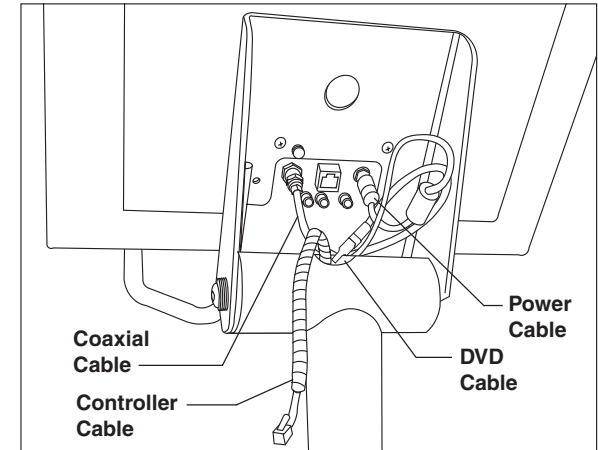
Attach it to the back of the LCD Screen. You'll hear a definite click as the connector snaps into place inside its receptacle.

**Note:** For more information about cable connections, see your Cardio Theater LCD Screen Assembly and Operation manual that was packaged with you product.

6

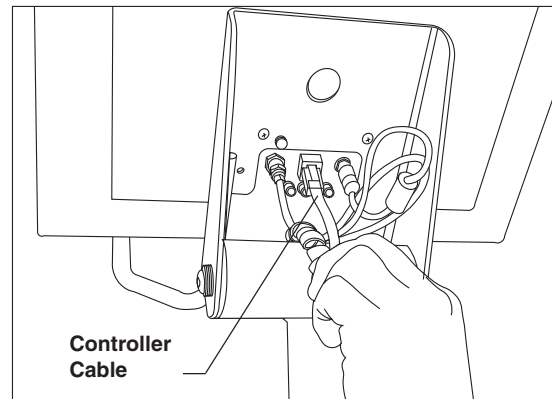


7



**Note:** The DVD Option Feed the DVD cable back into the axle tube compartment so it isn't hanging out.

8



# 5

## Reinstall the Bracket Cover

**Important:** If you are installing the DVD Player Bracket Option along with this option, do not install the bracket cover at this time. Refer to the DVD Player Bracket assembly instructions before continuing with these instructions.

1. Align the fasteners.

Hold the bracket cover above the axle tube. Push the washers and bearings toward the bolt heads so there is room for the bracket cover to slide in flush against the axle tube.

**Important:** Keep the bracket cover flanges flush with the axle tube. The washers and bearings need to remain on the outside of the bracket flanges.

2. Replace the bracket cover.

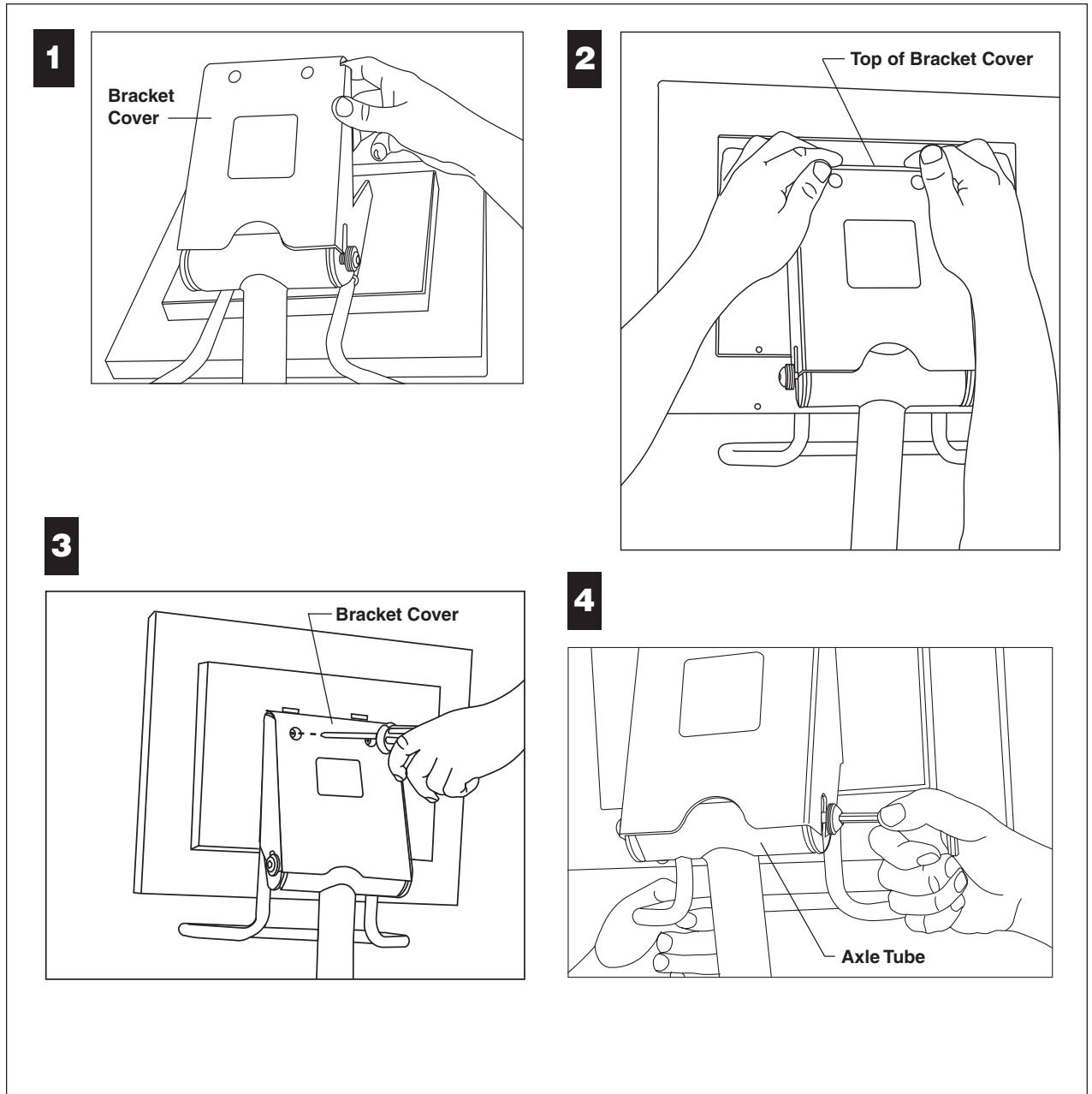
Apply pressure to the top of the bracket cover while you slide it into position.

3. Tighten the screws on the back of the LCD Screen.

Use a Phillips-head screwdriver to fully tighten the top two screws on the back of the LCD Screen. Access holes have been drilled through the bracket cover.

4. Secure the bracket cover.

Use a torque wrench with a  $\frac{7}{32}$ -inch hex key to retighten the two axle tube fasteners to 120 in-lbs.



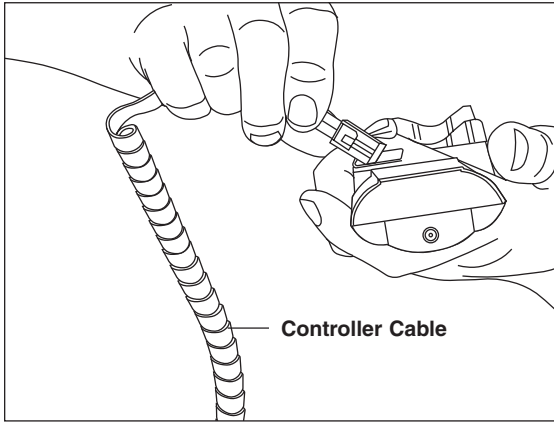
# 6

## Attach the Controller and Connect the Power Cables

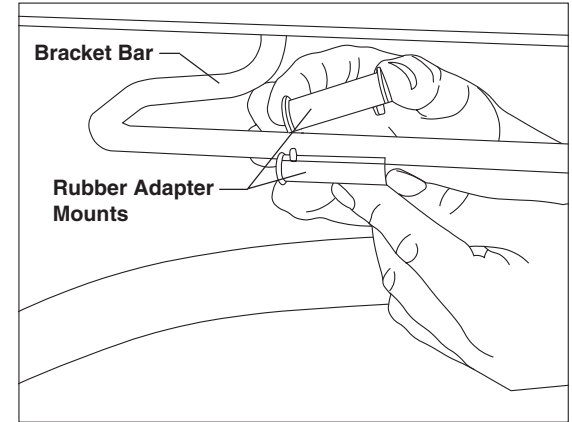
**Note:** Retrieve the rubber adapter mounts from the bracket assembly package. Retrieve the controller from the LCD Screen package.

1. Connect the controller cable to the controller.  
A definite click is heard when the connector snaps into place inside its receptacle.
2. Place the rubber adapter mounts around the center of the bracket bar.
3. Secure the controller.  
Use two tie wraps to secure the controller to the rubber adapter mounts and bracket bar.
4. At the base of the treadmill, plug the power cables into the strip designed for Cardio Theater use.

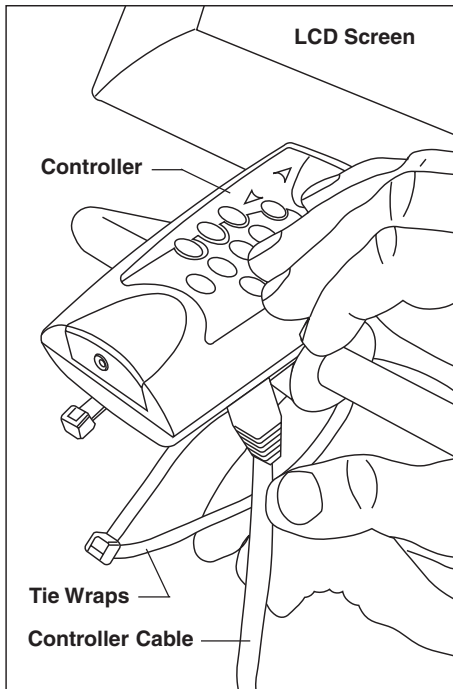
**Note:** For more information, refer to the Cardio Theater LCD Screen Assembly and Operation manual that was packaged with your product.



1



2



3





Precor Incorporated  
20031 142nd Avenue NE  
P.O. Box 7202  
Woodinville, WA USA 98072-4002

Precor and Cardio Theater are registered trademarks of Precor Incorporated.  
Specifications subject to change without notice.  
Copyright 2004 Precor Incorporated.  
Precor web site: [www.precor.com](http://www.precor.com)

**NOTICE:**

Precor is widely recognized for its innovative, award winning designs of exercise equipment. Precor aggressively seeks U.S. and foreign patents for both the mechanical construction and the visual aspects of its product design. Any party contemplating the use of Precor's product designs is hereby forewarned that Precor considers the unauthorized appropriation of its proprietary rights to be a very serious matter. Precor will vigorously pursue all unauthorized appropriation of its proprietary rights.