

EFX[®] Integrated LCD Screen Option, RX

Cardio Theater Integrated Bracket Assembly Instructions

Table of Contents

1	Before You Begin	3
	Obtaining Service	3
	Unpacking the Equipment	3
	Important Safety Instructions	3
2	Preparations	4
	Required Tools	4
	Installation Requirements	4
	Assembly Tips	4
3	Preparing the Units	5
4	Install the Bracket Assembly	10
5	Attach the LCD Screen	12
6	Reinstall the Bracket Cover	14
7	Connect the Controller and the Cables	15

1

Before You Begin

Thank you for adding the Precor Cardio Theater Integrated LCD Screen Option to your EFX®. This option will add a new dimension to your workout.

For proper installation, please read this guide thoroughly and follow the assembly instructions.

Obtaining Service

For information about product operation or service, refer to the Precor web site at www.precor.com. Should you need more information regarding customer support numbers or a list of Precor authorized service centers, visit the Precor website at www.precor.com/contact.

Unpacking the Equipment

The Cardio Theater Integrated Bracket for the LCD Screen is shipped in one box with the following items:

- Bracket assembly
- Power extension cable
- Four Phillips-head screws
- Rubber adapter mounts

If any items are missing, contact the dealer from whom you purchased the unit or call a Precor Commercial Products Customer Support Representative.

Important: To complete the assembly of the Cardio Theater Integrated Bracket, you need the Cardio Theater LCD Screen Option, which is shipped in a separate box. Included with the screen are two cables (coaxial/power cable and controller cable), which you will need during the assembly process.

Important Safety Instructions

When using exercise equipment, basic precautions should always be taken, including the following:

- **Read all instructions before using the unit.** These instructions are written to ensure your safety and to protect the equipment.
- **Use the equipment only for its intended purpose.** Do not use accessory attachments that are not recommended by the manufacturer, as such attachments might cause injuries.
- **Always check the unit before each use.** Make sure that all fasteners and cables are secure and in good working condition.

Important: The important safety instructions written here reflect a portion of what is found in the Precor EFX owner's manuals. Please review and follow the safety instructions found there.

2

Preparations

Important: To attach the Cardio Theater Integrated Bracket, ask another adult for help. Do not attempt the assembly by yourself.

Remember to read and follow the instructions in this guide. If you do not assemble the Cardio Theater Integrated Bracket according to these guidelines, you could void the Precor Limited Warranty.

Required Tools

Obtain these tools before assembly:

- Standard hex key set
- Phillips-head screwdriver
- Needle-nose pliers
- Roll of electrical tape
- Standard torque wrench

Installation Requirements

Review these installation requirements before assembly:

- The Cardio Theater Integrated Bracket is built to VESA MIS-D, 100/75 standard interface specifications.
- Provide ample space around the EFX. Open space around the unit allows for easier access and installation.
- Open the box and assemble components in the sequence presented in this guide.
- Leave room for adjustments. Tighten fasteners (bolts, nuts, and screws) so the unit is stable, but leave room for adjustments. Do not fully tighten fasteners until instructed in the assembly steps to do so.

Assembly Tips

- Read all the notes on each page before completing that step.
- While you may be able to assemble the Cardio Theater Integrated Bracket using the illustrations only, important safety notes and other tips are included in the text.

The assembly of the Cardio Theater Integrated Bracket takes about ½ hour to complete.

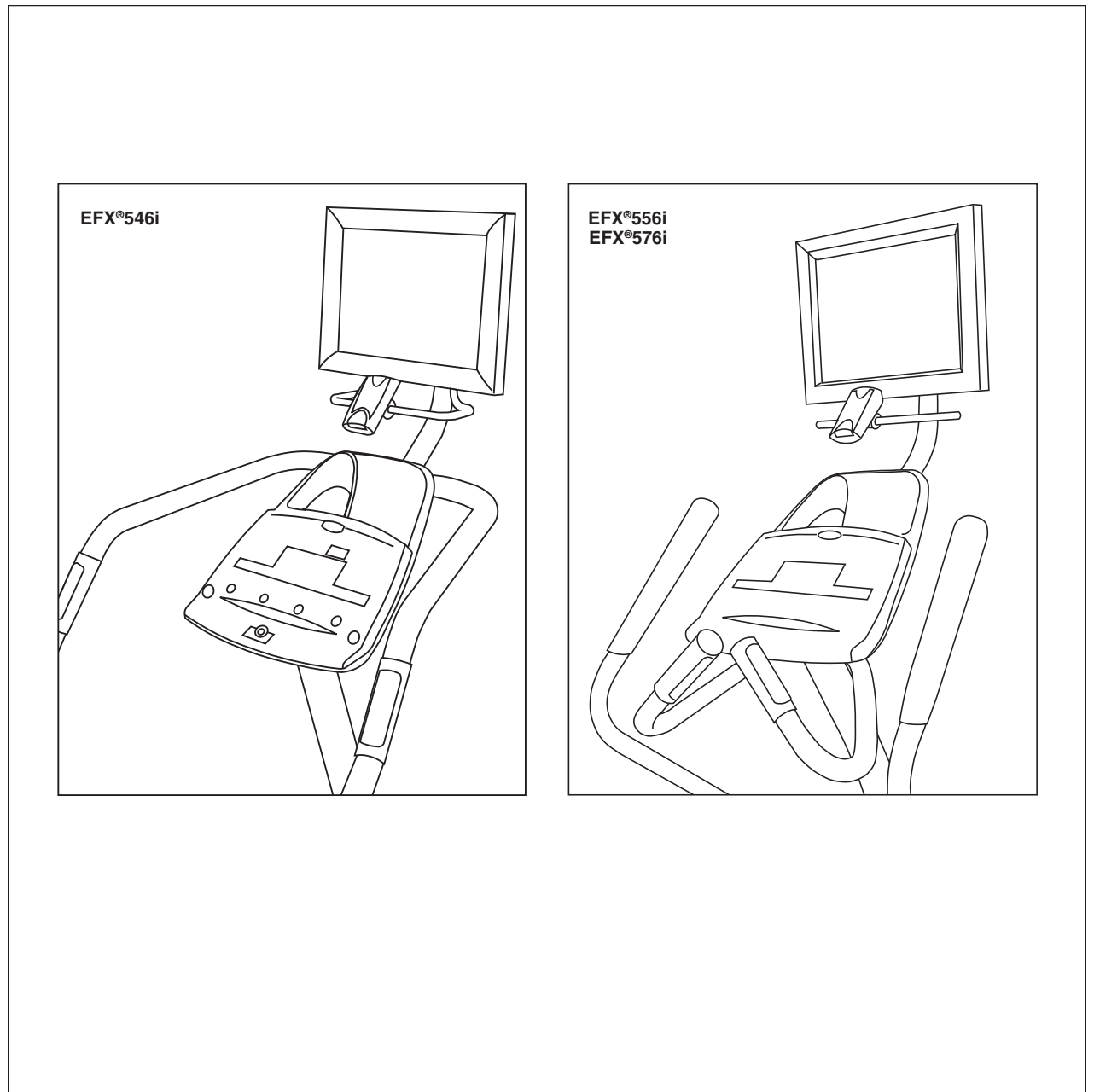
3

Preparing the Units

The illustration shows how the Cardio Theater Integrated Bracket will look after you install it on the EFX.

This section contains preparation instructions for the EFX546i, EFX556i and the EFX576i. The installation is the same on all three units.

Note: The illustrations shown in this section depict the EFX576i installation, but the same steps apply to all three units.



1. Loosen the two inside bracket fasteners on the upright supports using a $\frac{3}{16}$ -inch hex key.

Important: Do not remove the two inside bracket screws!

2. Separate the display console from its bracket. Ask your assistant to hold the display console while you remove the four screws from the back of the display console bracket using a $\frac{5}{32}$ -inch hex key. If the display console slides off the display console bracket, its weight can place excessive pressure on the data cable.

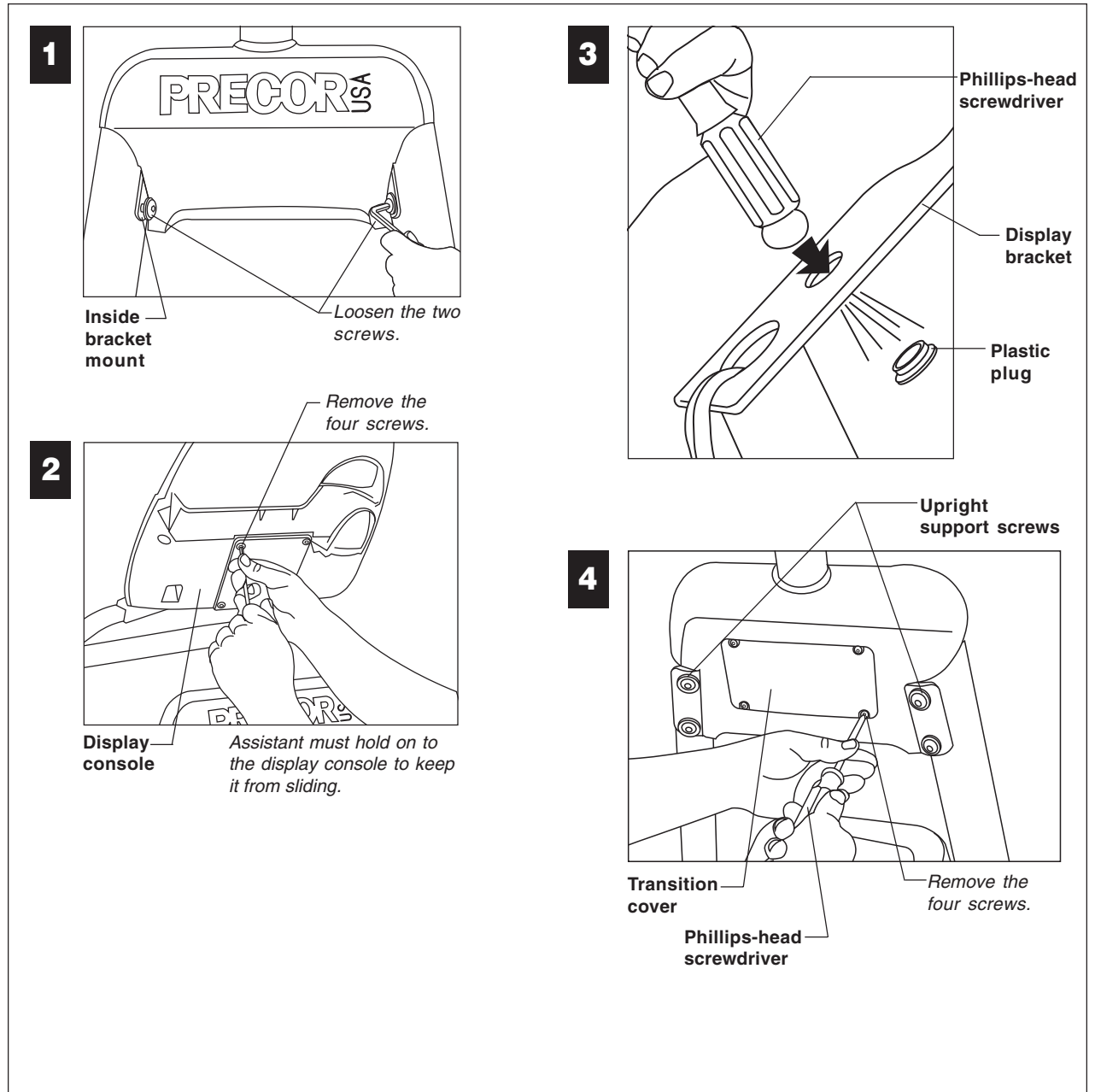
3. Remove the plastic plug.

Use your thumbs or the round end of the Phillips-head screwdriver to push the plastic plug from the display console bracket. Discard the plug.

4. Remove the transition cover.

Remove the four Phillips-head screws securing the transition cover. Set the screws and cover aside.

Important: Do not remove the four screws securing the upright supports. Removing the screws that secure the upright supports may cause misalignment problems.



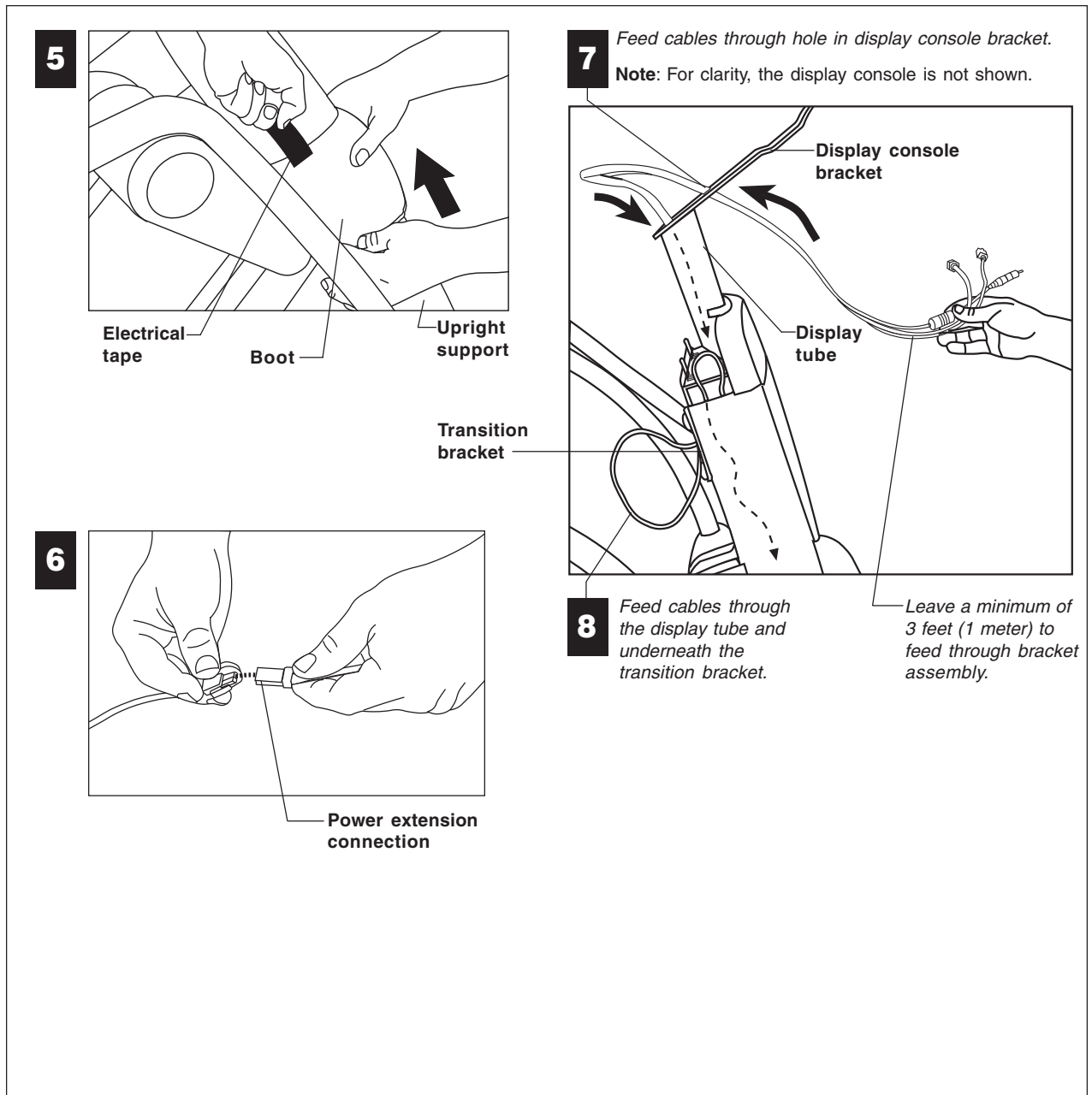
- Expose the base of the right upright support.
Slide the right upright support boot out of the base mount and use electrical tape to secure it to the upright support.
- Attach the power extension cable to the Cardio Theater power cable.

Note: To make it easier to feed the cables through the transition piece and upright support, select three or four places to bind both cables together with electrical tape. Make sure the cable is not bunched up.

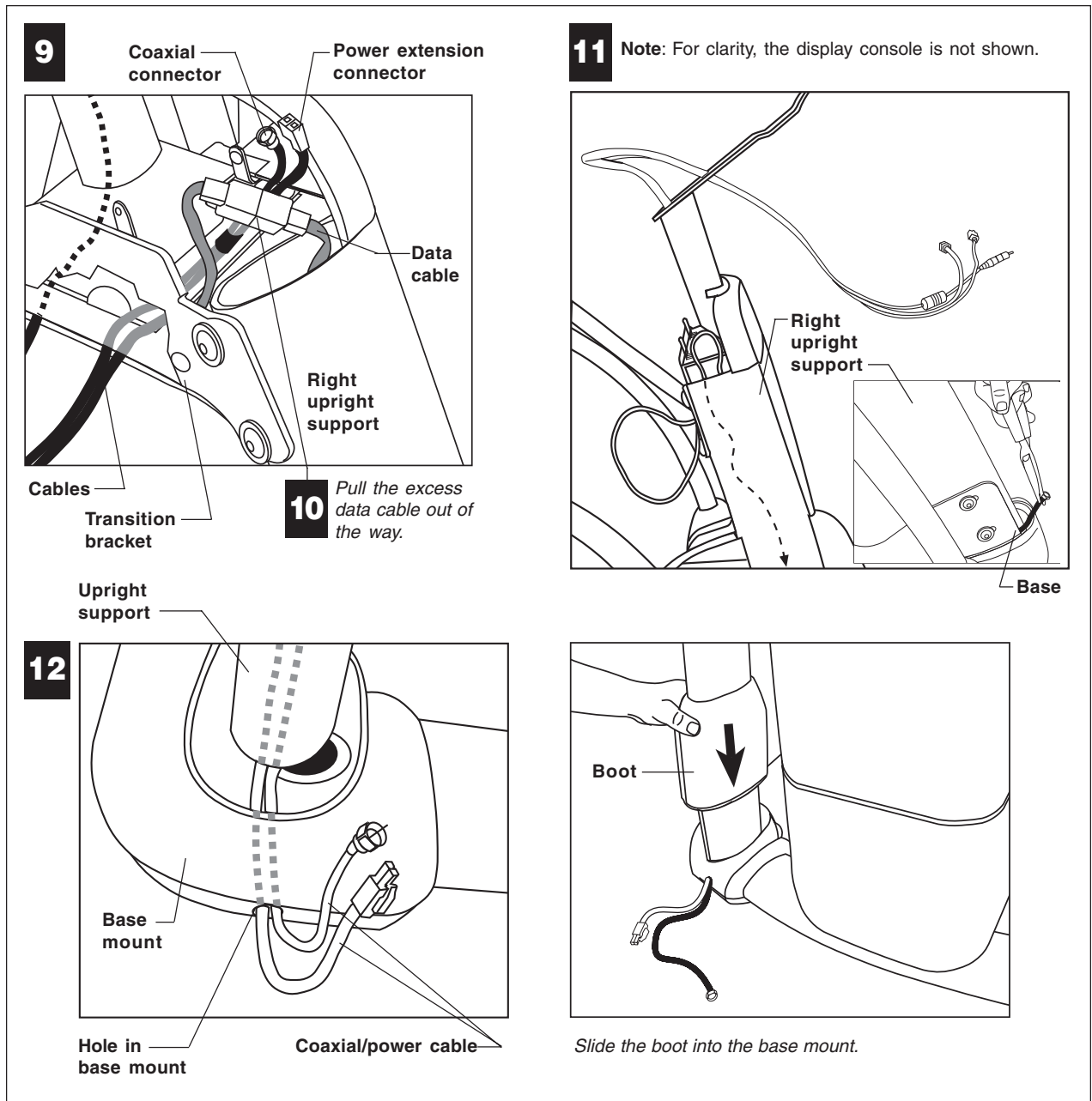
- Feed the cables through the display console bracket.
Insert the coaxial/power cable with its connectors up through the hole in the console bracket.

- Slide the coaxial/power cables into the display tube.
Continue feeding the coaxial/power cable with its connectors down through the display tube and pull them out from underneath the transition bracket.

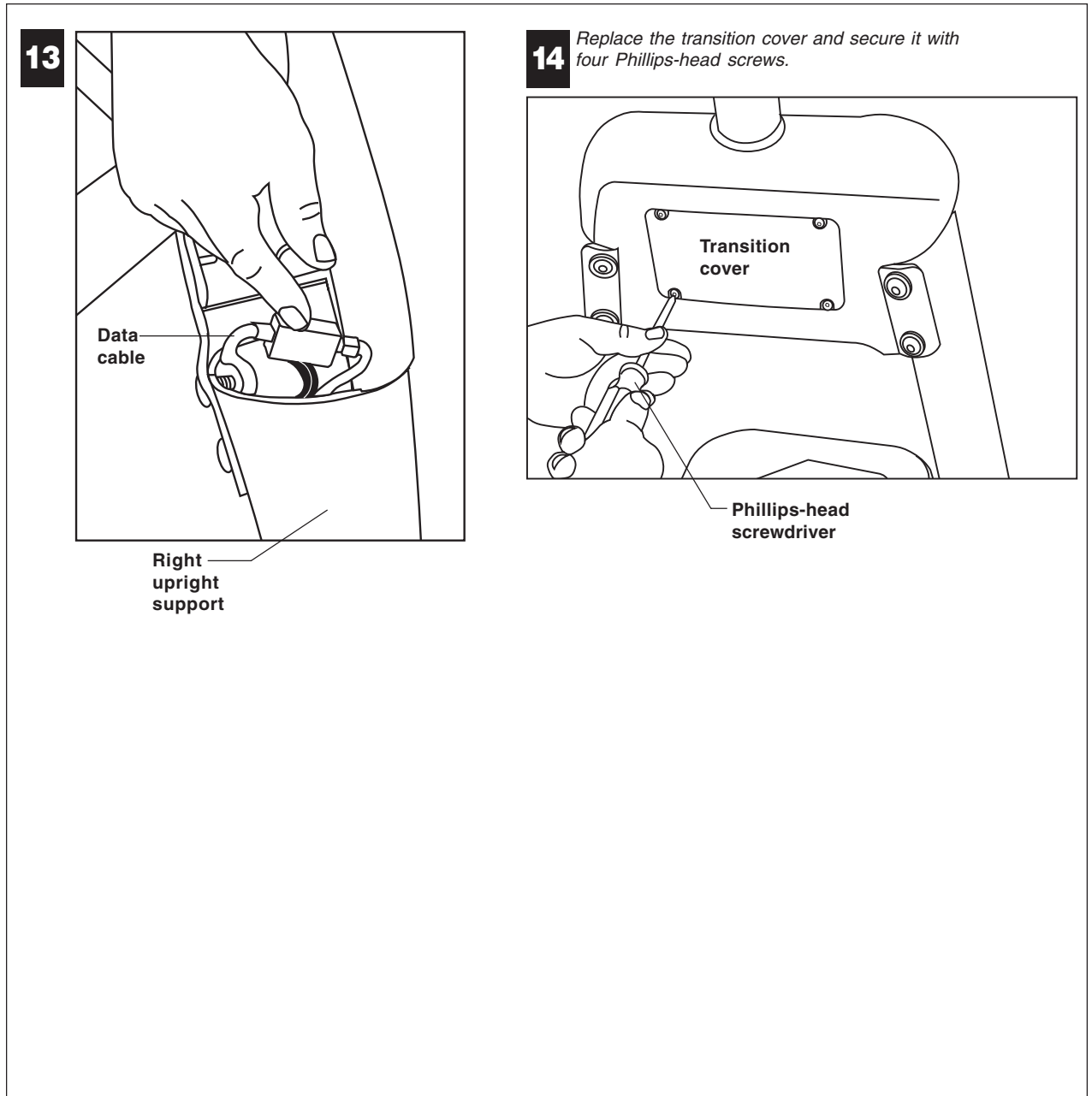
Note: Leave about 3 feet (1 meter) of coaxial/power cable with its connectors hanging out of the hole in the display console bracket. These cables (coaxial, power, and DVD) will be fed through the bracket assembly before it is attached to the back of the display console.



9. Reroute the coaxial/power cable with its connectors back up through the transition bracket. Refer to the illustration.
10. Locate the data cable inside the right upright support and pull the excess cable aside.
11. Feed the coaxial/power cable with its connectors down through the right upright support. Pull the coaxial/power cables out from the base of the upright support using a needle-nose pliers.
12. Feed the coaxial/power connectors through the hole in the base mount. Gently, pull any excess cable through the hole as well. Discard the tape holding the boot to the upright support. Slide the boot into the base mount and apply pressure to fasten it.



13. Replace the excess data cable into the upright support.
14. Reinstall the transition cover.
Replace the four Phillips-head screws. Wrench tighten.



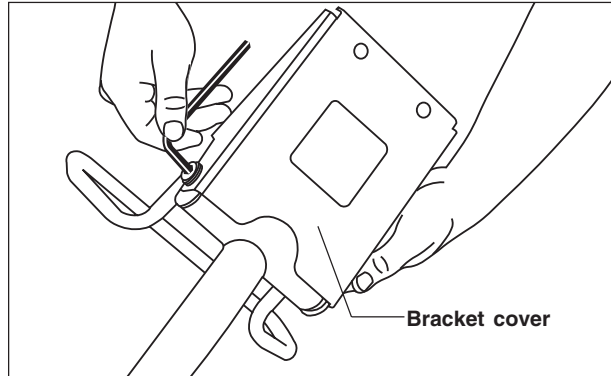
4

Install the Bracket Assembly

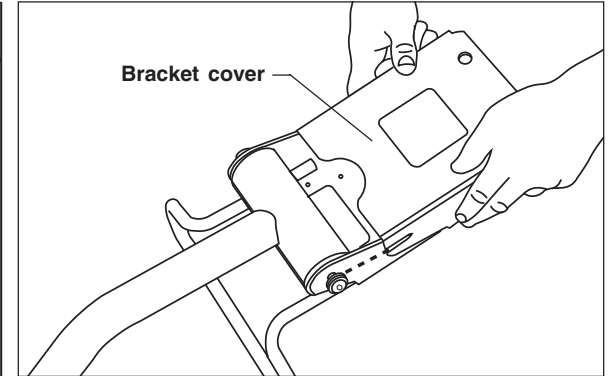
1. Remove the bracket cover.
Loosen the bolts on the pivot tube using a $\frac{7}{32}$ -inch hex key. Pull the bracket cover away from the assembly. Set it aside.

2. Feed the coaxial/power cable with its three connectors through the bracket assembly.

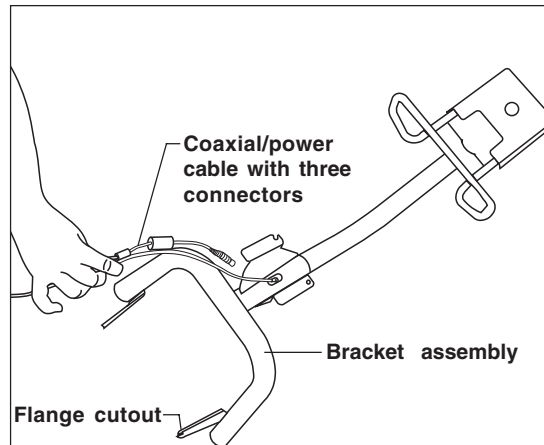
Ask your assistant to hold the bracket assembly near the upright support while you slide the coaxial/power cable and its three connectors (coaxial, power, and DVD) through the bracket assembly tube.



1



2



3. Fit the flange cutouts inside the bracket fasteners.
Align the bracket assembly flange cutouts against the upright supports.

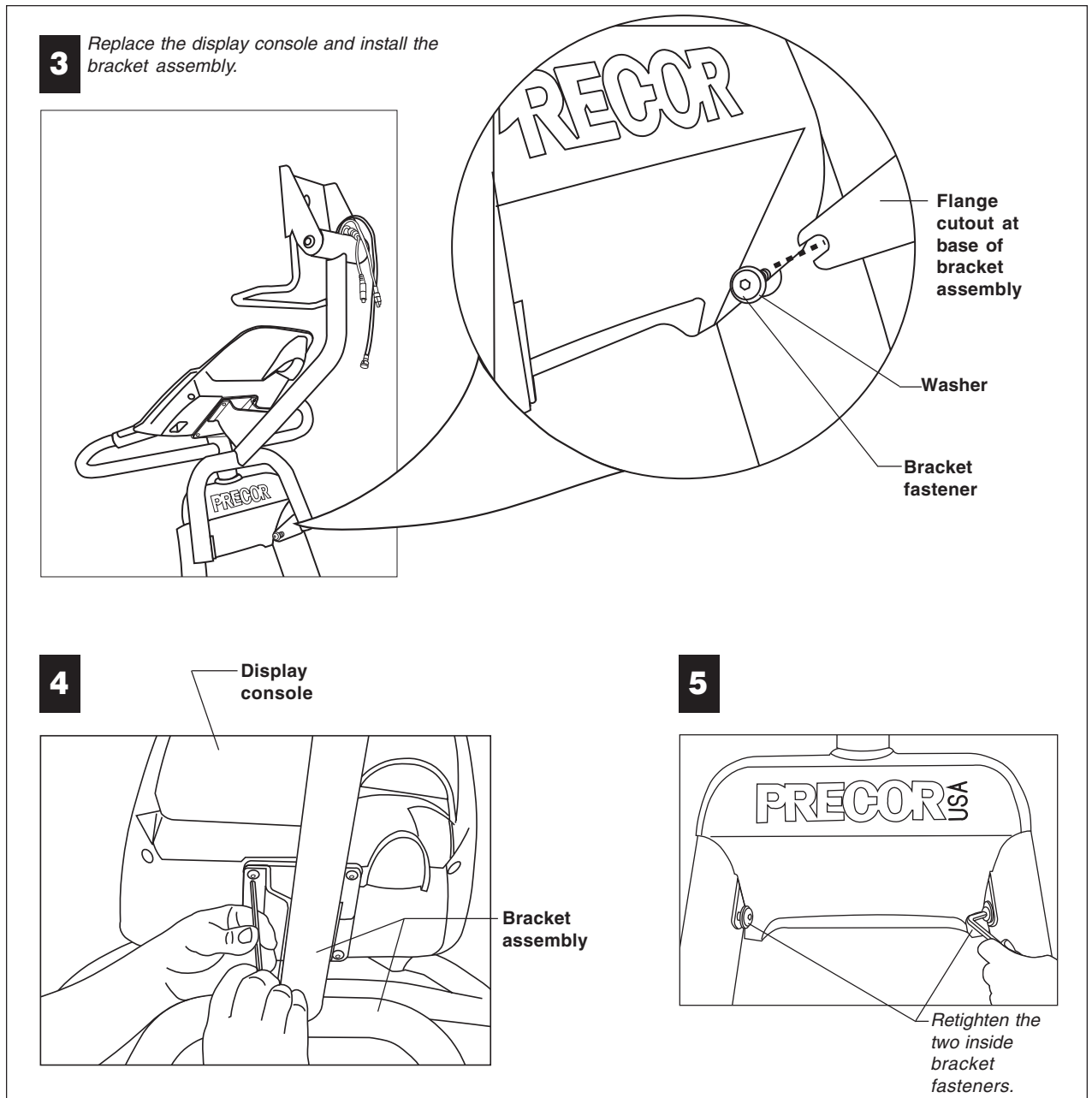
Important: Before tightening the fasteners, make sure that the washers are against the head of the bracket fasteners and the bracket assembly flange cutouts slide into place alongside the upright supports.

4. Secure the bracket assembly and the display console.

Ask your assistant to continue holding the bracket assembly, while you align the display console mounting holes and replace the four display console screws. Securely tighten all four screws using a $\frac{5}{32}$ -inch hex key.

5. Secure the base of the bracket assembly.

Retighten the two inside bracket fasteners on the upright supports using a $\frac{3}{16}$ -inch hex key.



5

Attach the LCD Screen

Important: The screen spacer is used only for the Cardio Theater PVS4/5/15 LCD Screen.

1. To protect the LCD Screen for the next few steps, place it screen side down on a clean work surface.

Important: Use proper materials to protect the LCD Screen while you remove the plastic cover and metal mounting bracket from the backside of the LCD Screen.

2. Remove the plastic cover.

Use a Phillips-head screwdriver to remove the two screws holding the plastic cover to the LCD Screen. Discard the plastic cover and the screws.

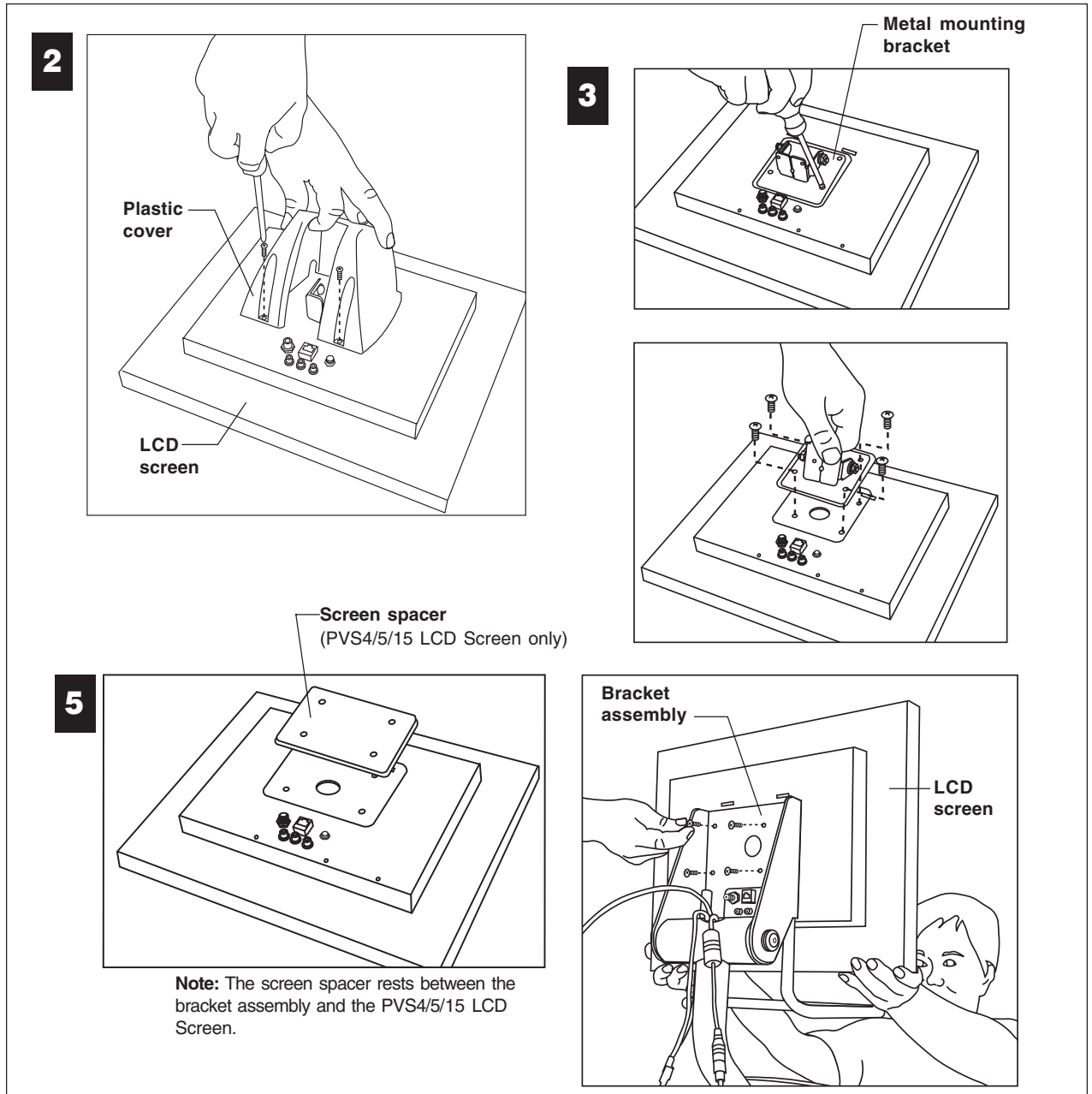
3. Remove the metal mounting bracket.

Remove the four screws securing the metal mounting bracket. Discard the mounting bracket and the four screws.

4. Retrieve four new Phillips-head screws from the bracket assembly package.

Note: Use the longer screws if attaching the screen spacer with the PVS4/5/15 LCD Screen.

5. Attach the LCD Screen to the bracket assembly. If you have the Cardio Theater PVS4/5/15 LCD Screen, you will need to insert the screen spacer between the screen and bracket to ensure a proper fit.



6. Fully tighten the bottom two screws.

Use a Phillips-head screwdriver to fully tighten the bottom two screws. Leave the top two screws finger tight.

7. Connect the coaxial/power cable connectors to the LCD Screen.

Attach the connectors—coaxial, power, and DVD—to the back of the LCD Screen.

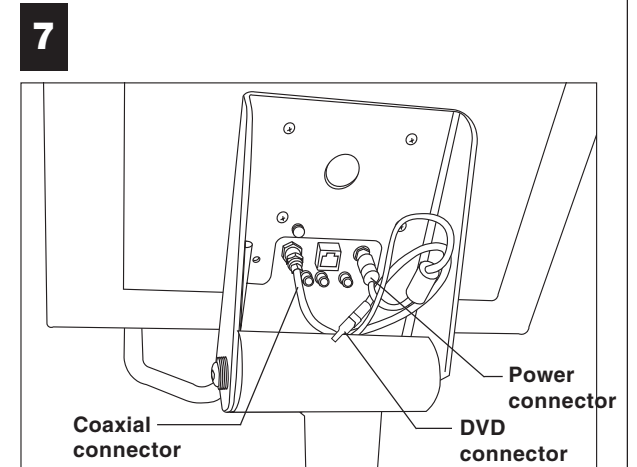
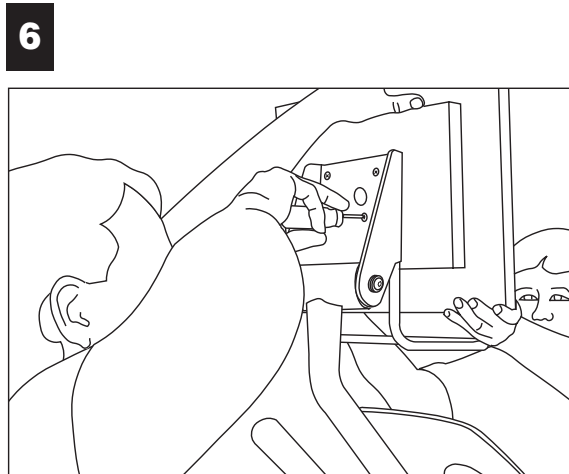
Note: If you do not have a DVD option, you can feed the DVD cable back into the pivot tube compartment so it is not hanging out.

8. Connect the controller cable.

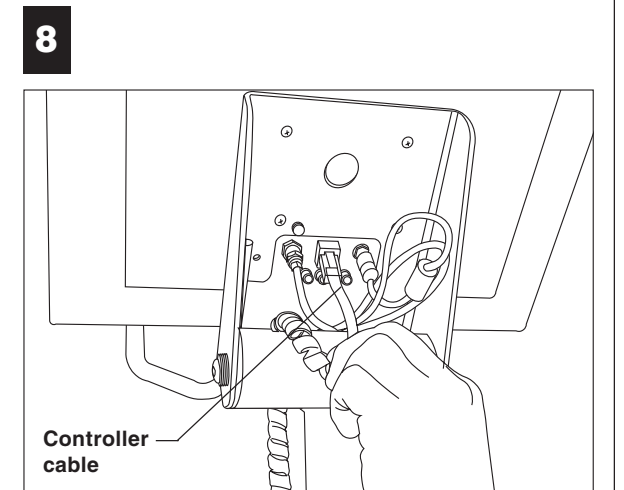
Feed the controller cable through the front side of the pivot tube and attach it to the back of the LCD Screen. You will hear a definite click as the connector snaps into place inside its receptacle.

Note: For more information about cable connections, refer to the Cardio Theater LCD Screen manual.

Important: If you purchased the DVD Integrated Bracket Option, you will want to install that option before you continue to the next section. Refer to the DVD Integrated Bracket Option Guide for assembly instructions.



Note: If you do not have the DVD option, you can feed the DVD cable back into the pivot tube compartment so it is not hanging out.



6

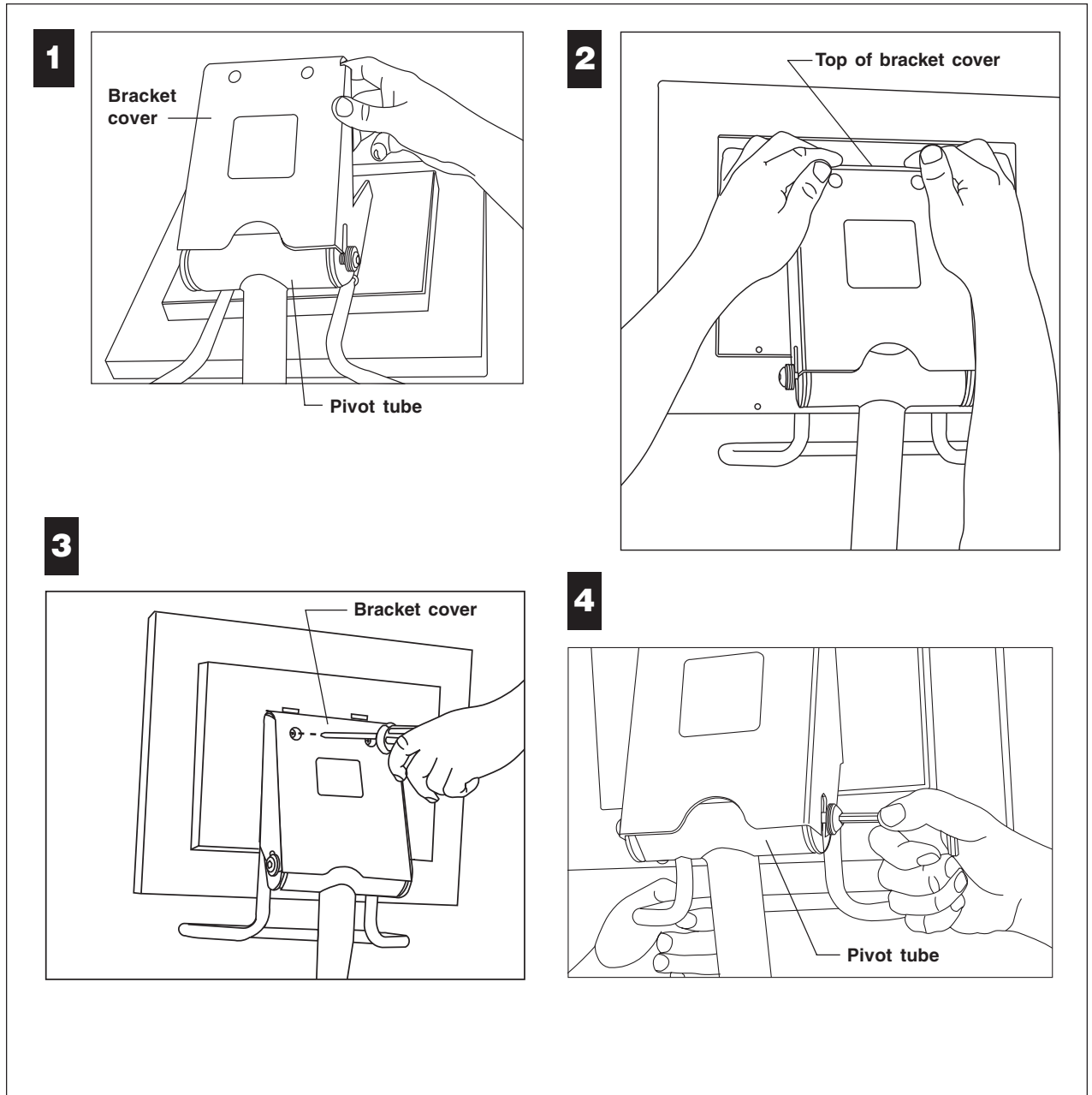
Reinstall the Bracket Cover

1. Prepare the fasteners for reinstalling the bracket cover.

Push the washers and bearings toward the bolt heads so there is room for the bracket cover to slide in flush against the pivot tube.

Important: Keep the bracket cover flanges flush with the pivot tube. The washers and bearings need to remain on the outside of the bracket flanges.

2. Hold the bracket cover above the pivot tube.
Apply pressure to the top of the bracket cover while you slide it into position.
3. Tighten the two top screws on the back of the LCD Screen.
Use a Phillips-head screwdriver to fully tighten the top two screws on the back of the LCD Screen. Access holes have been drilled through the bracket cover.
4. Secure the bracket cover.
Using a torque wrench and a $\frac{7}{32}$ -inch hex key, retighten the two pivot tube fasteners to 120 in-lbs.

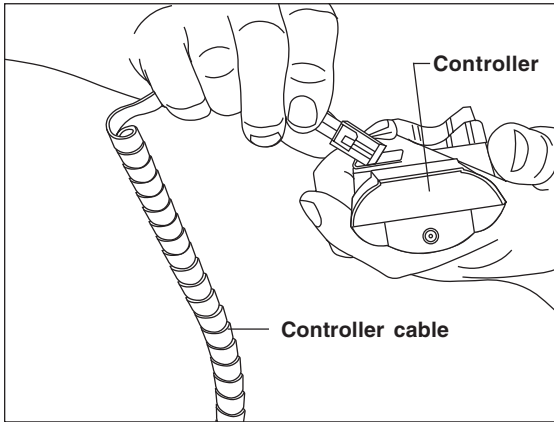


7

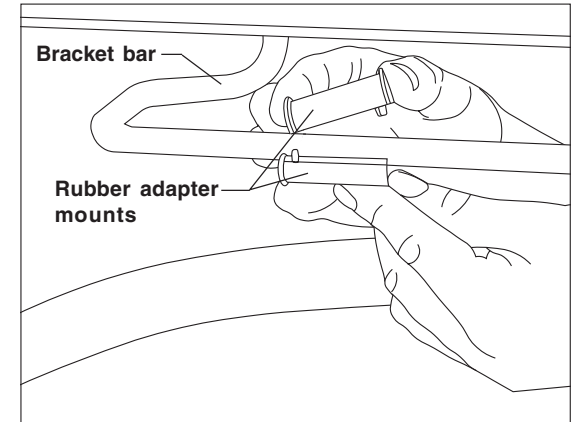
Connect the Controller and the Cables

Note: Retrieve the rubber adapter mounts from the bracket assembly package. Retrieve the controller from the LCD Screen package.

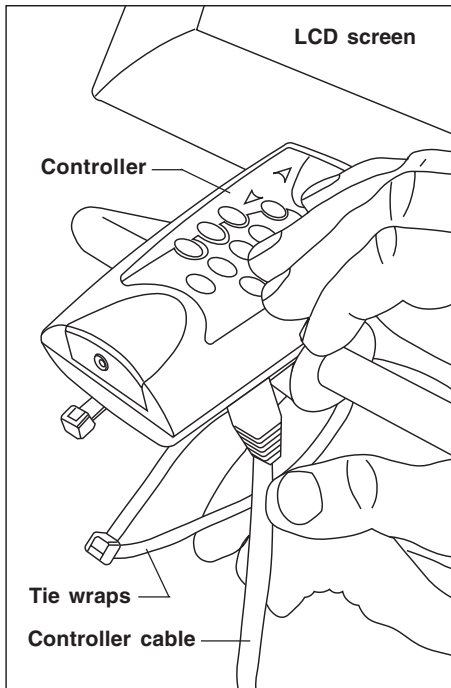
1. Connect the controller cable to the controller.
A definite click is heard when the connector snaps into place inside its receptacle.
2. Place the rubber adapter mounts around the center of the bracket bar.
3. Secure the controller.
Use two tie wraps to secure the controller to the rubber adapter mounts and bracket bar.
4. At the base of the EFX, plug the power and coaxial connectors on the coaxial/power cable into the strip designed for Cardio Theater use.
Note: For more information, refer to the Cardio Theater LCD Screen manual.



1



2



3



Precor Incorporated
20031 142nd Avenue NE
P.O. Box 7202
Woodinville, WA USA 98072-4002

Precor and Cardio-Theater are registered trademarks of Precor Incorporated.
Specifications subject to change without notice.
Copyright 2005 Precor Incorporated.
Precor web site: www.precor.com

NOTICE:

Precor is widely recognized for its innovative, award winning designs of exercise equipment. Precor aggressively seeks U.S. and foreign patents for both the mechanical construction and the visual aspects of its product design. Any party contemplating the use of Precor's product designs is hereby forewarned that Precor considers the unauthorized appropriation of its proprietary rights to be a very serious matter. Precor will vigorously pursue all unauthorized appropriation of its proprietary rights.

Cardio Theater Integrated Bracket Assembly Lit Kit # CX48432-102
EFX i-series
15 June 2005